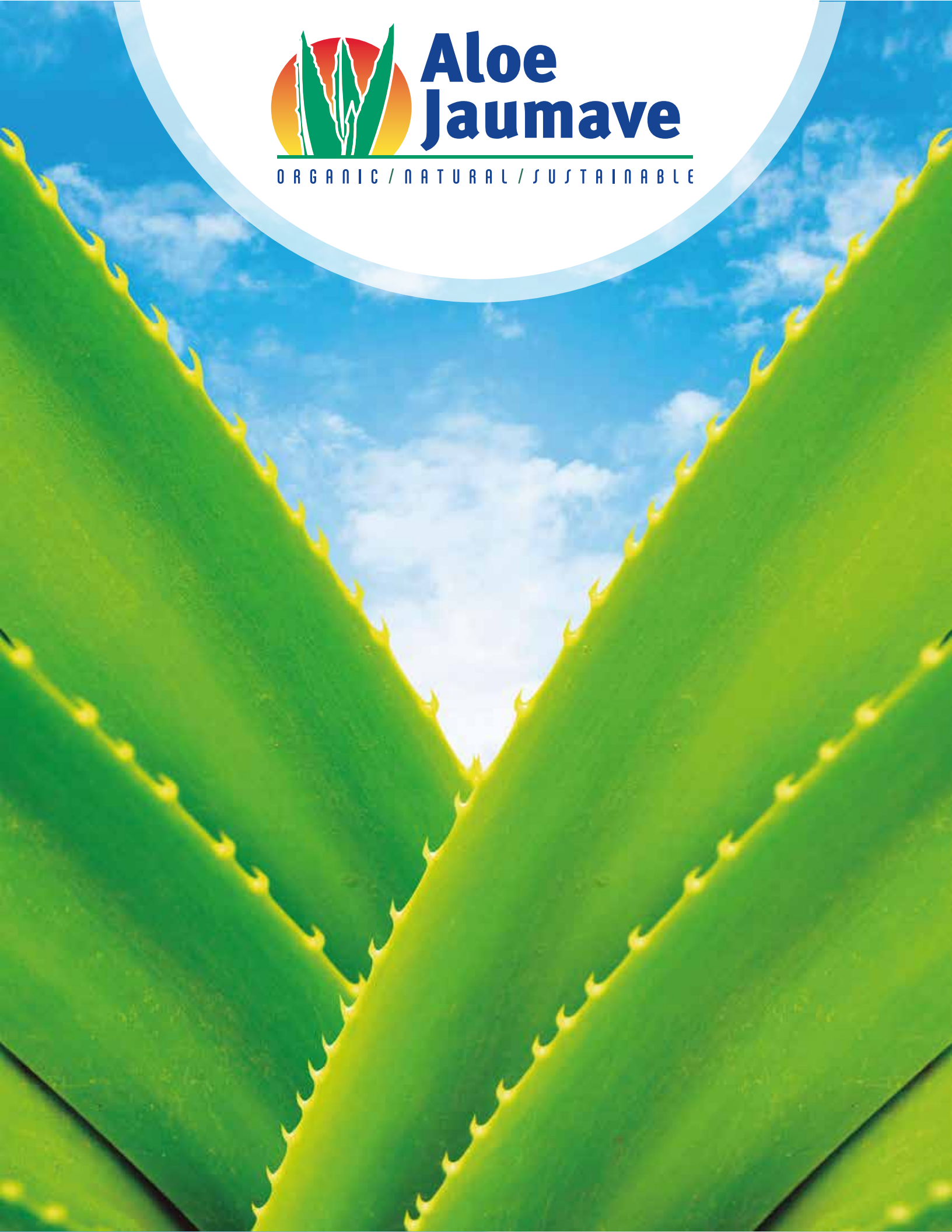




Aloe Jaumave

ORGANIC / NATURAL / SUSTAINABLE



HISTORY AND LOCATION

Aloe Jaumave was founded in 1989, and from the beginning the company decides to settle in **Jaumave**, a small town located in a beautiful valley in the state of Tamaulipas, on the North East of Mexico. This small town was well known by its numerous plantations of Aloe Vera, back then the company started with only one main activity, the export of Fresh Aloe Vera Leaves to United States.

Thanks to the privileged location of Jaumave's Valley, a pollution free environment with natural and optimum conditions of the earth helped us to Organic Certify all of our Aloe Vera fields (500 Hectares).

Now on days, 25 years later, the company expanded its activities to the growing, harvesting, processing and bottling Aloe Vera (Raw Materials and Finished Products) for the Food, Cosmetic and Pharmaceutical Industry. After all these work, Aloe Jaumave has become the largest supplier of Organic Certified Aloe Vera in the world, always following **our original commitment: Aloe Vera.**



WE OWN THE LARGEST ORGANIC CERTIFIED PLANTATIONS IN THE WORLD



ALOE SUSTAINABLE NATURAL PURITY

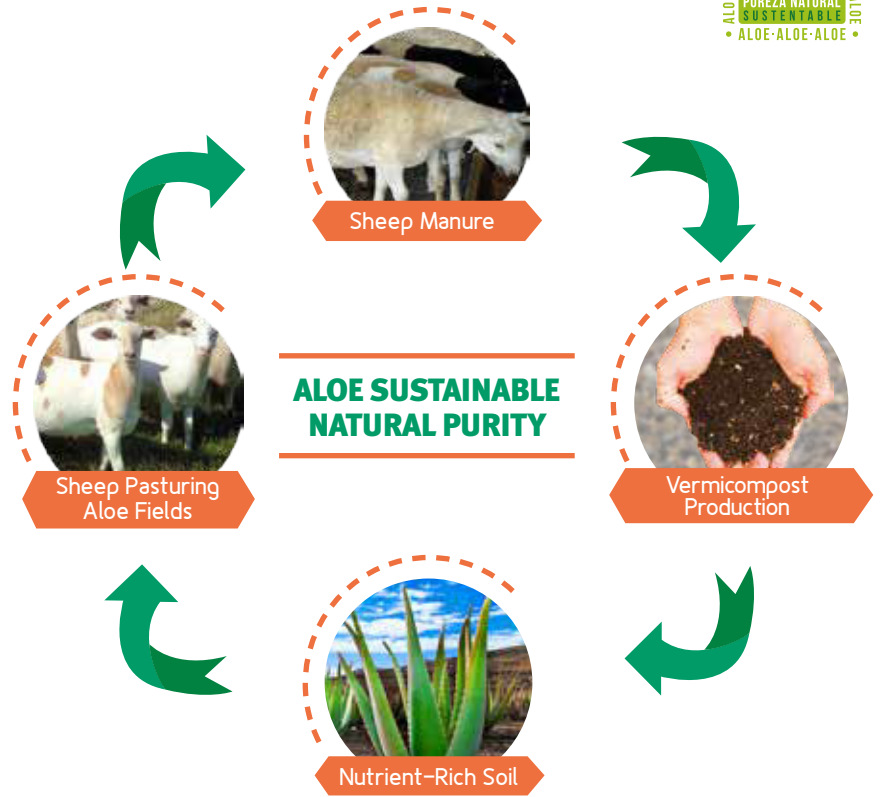


“Aloe Sustainable Natural Purity” it’s a patented process by Aloe Jaumave witch allows us to satisfy our customers and prospects needs without compromising the Aloe Vera quality and ensuring excellent quality plants with a long-range supplying.

BASIC PRINCIPLES

- No Pesticides
- No Herbicides
- No Chemical Fertilizers

This methodology involves organic harvest, composting, natural soil enrichment, manufacture and product distribution.



CERTIFICATIONS



MAIN MANUFACTURING PROCESS

- Aseptic Filling
- Hot Fill Bottling
- Freeze Dried

FREEZE DRYING PROCESS

Freeze drying means to freeze the liquid material that contains water and then sublimate the vapor under vacuum condition and the active contents of the material are still left in the solid. In order to improve the sublimating speed and shorten drying time, it has to heat the frozen solid. The whole process of heating and drying should be done under a lower temperature. Normally the working temperature is under 0° C.

FREEZE DRYING PROCESS CHARACTERISTICS

- 1.** Under a lower temperature, the active contents of the material will not change its shape, color, taste and nutritional elements are kept well, so it can be applied to treat the thermal sensitive materials, such as protein and microorganism materials.
- 2.** Drying at low temperature, the material losses of volatile components are quite small.
- 3.** Frozen in drying process, the growth of microorganisms and the action of an enzyme cannot work. Therefore, it can guarantee the materials by keeping its original characteristics.
- 4.** Drying under frozen conditions, will not change the materials in size and original structures
- 5.** The dried materials are loose as a sponge. It can be rapidly dissolved in water and reverted to the original characteristics.
- 6.** Drying under the vacuum condition with little oxygen can avoid the active contents from oxidation.
- 7.** Drying process can remove 94%–99% water content, so the dried aloe materials will preserve a longer time without degeneration.



ALOE VERA PROCESS

OUR RAW MATERIALS:

- Single Strength Extracts with/without pulp
- Diced/Chunks
- Concentrates
- Powders



PRIVATE LABEL





“BRINGING THE BEST OF ALOE TO THE WORLD”

ALOE JAUMAVE S.A DE C.V
Méndez 501, Zona Centro
Jaumave, Tamaulipas
México, C.P 87930



Tel/Phone: +52 (832) 3360099
Fax: +52 (832) 3360170
www.aloejaumave.com
info@aloejaumave.com