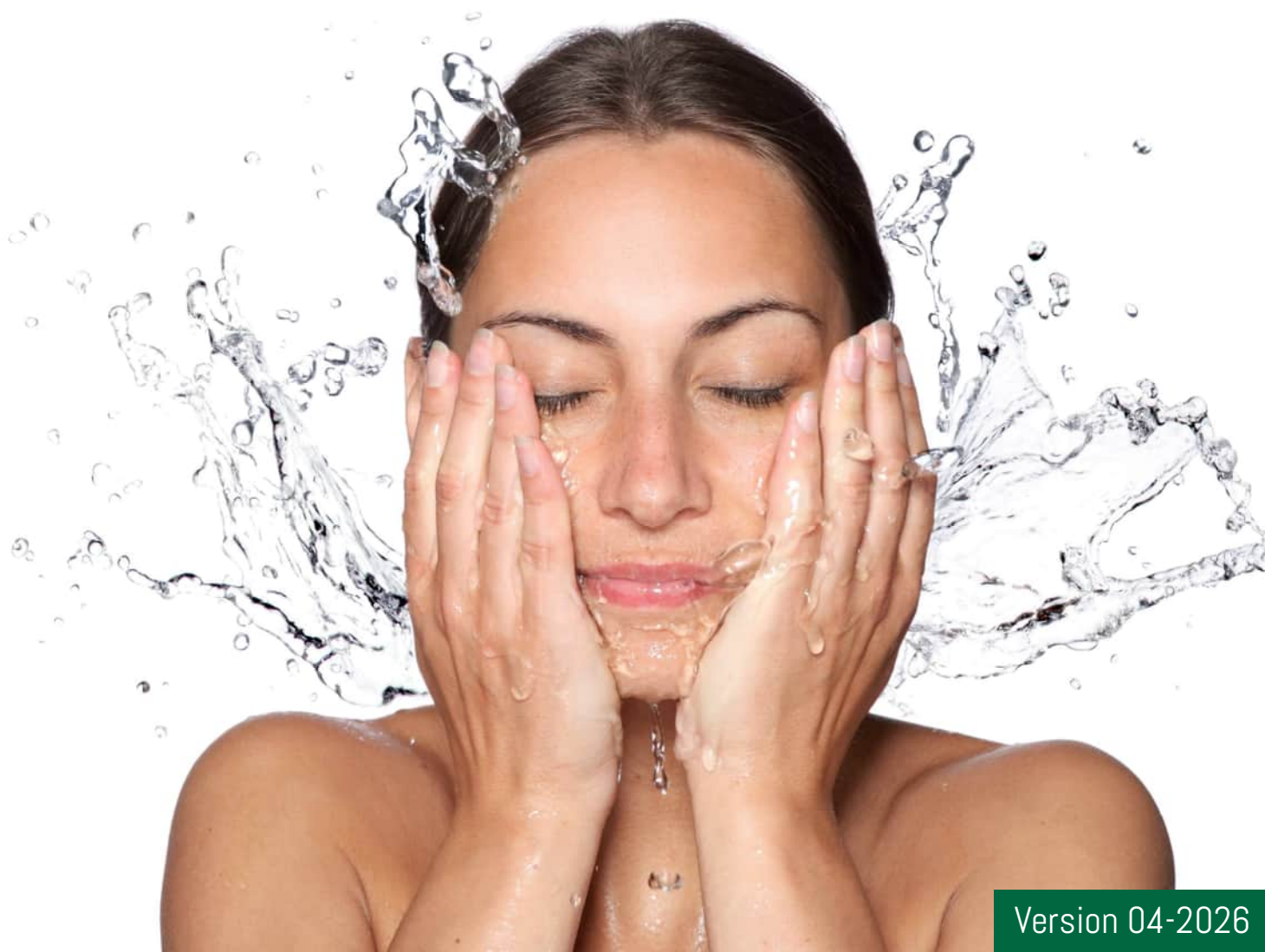


Delivery Program

Cosmetic Raw Materials



Fine Chemicals and More...

Since 1997 we are the trading and distribution partner for selected chemicals and natural raw materials focused on the cosmetic and pet food industries as well as related applications.

- Operating business on long-term and reliable relationships with partners in Europe, Asia and Latin America
- Focused on Raw Materials and Solutions for the Personal Care & Beauty, Feed, Food and Pet Food industry with strong alignment towards natural and organic certified ingredients
- Sales promotion and business development through strong technical expertise
- Vast expertise in regulated industries. Quality Management & Certifications
- ISO 9001:2015, ISO 14001:2015, GMP+B3, Feed Registration, Certified to import and process organic products according EC834/2007, RSP0
- Main territory Germany, Austria and Switzerland



Innovative

We want to enable our customers to meet actual and future trends with innovative ingredients



Reliable

High reliability in product quality, availability and compliance with global standards



Sustainable

Develop sustainable business with our partners; enable them to enlarge their market presence with existing and new ingredients



Transparent

We provide high transparency with regards to business progress (forecasting, market monitoring, project pipeline, etc.)



Partner

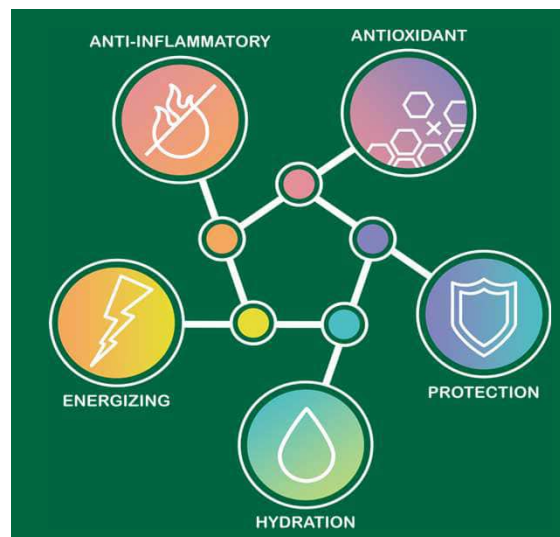
SLI Chemicals aims to be the extended distribution channel of our suppliers

SLI Chemicals: Distribution partner for specialty and semi-specialty chemicals in the Life Science industry

NEW UPCYCLED RANGE – We are happy to present the new extract range INAWAVE® of IK INABATA. Our French partner carefully selected **by-products** from local producers.

By **innovatively** repurposing agricultural and forestry materials, IK INABATA reduce waste and support a more sustainable future.

This new collection has **proven efficacy** and aligns with the most popular cosmetic claims.



	ANTI-INFLAMMATORY	ENERGIZING	HYDRATION	ANTIOXYDANT	PROTECTION
ALMOND SHELL	77%	100%	72%	26%	63%
CHESTNUT BARK	41%	81%	100%	54%	31%
WHITE TEA LEAF	59%	100%	100%	81%	43%
GRAPEVINE	36%	33%	100%	46%	38%
LIQUORICE LEAF	17%	100%	51%	34%	100%
CARROT SEED	73%	45%	65%	87%	40%
ALFALFA SEED	81%	100%	50%	100%	46%

More information about the above product ranges you will find on the pages 23-24.

Our partners for common goals – experienced, individual and solution-oriented



- Starches and Derivatives for Cosmetics



- Organic and conventional Jojoba Oil



- Bees Products



- Plant Oils, Butters and Waxes



- Conventional and organic certified Aloe Vera



- Fruit based Oils & Scrubs – upcycled



- Hyaluronic Acids and Derivatives



- Plant Extracts



- Baobab Oil



- Organic Seabuckthorn Oil, Water, Juice



- Allantoin & Natural bioactive Ingredients



- Silicones for Personal Care Formulations



- Emollients, Silicone Replacements, Solubilizing Agents, ...



- Amaranth Oil



- Glycerin (Cosmetic, Food, Pharma)



- Zinc Oxide Powders & Dispersions / UV-Filters and Booster



- Active Ingredients, Texturing & Oil Gelling Agents



- European origin Kaolin & Mica

Our product portfolio

Products	page
Actives for Skin Care	6-9
Actives for Hair Care	10-11
Actives – Extracts	11-13
Actives – Hyaluronic Acid	13-15
Actives – Hyaluronic Acid based blends – “Sharohyal”- product line	16-17
Amino Acids	17
Dispersing Agents – “green” Alternatives to volatile D4/D5 Silicon Oils	18
Emollients	19
Emulsifiers	20-22
Extracts (Biotech, Eco-friendly actives and Upcycled)	23-24
Kaolin and Mica	24
Natural or Organic Oils	25-26
Natural Vegetable Butters	27
Natural Compositions for Skin Care	28
Natural Vegetable Waxes	28
Other Products (natural and non-natural)	29
Oils – water soluble RSPD	30-31
Peeling Agents / Scrubs	31
Preservatives for Personal Care	32-35
Silicones for Personal Care	36
Smart Solutions	37-39
Solubilizers and Solvents	39
Stabilizers, Thickeners and Binders	40
Starches for Cosmetic Applications	41-42
Surfactants	43
Zinc Oxides & Boosters	44-46
Zoom to Opportunities (Esters)	47

Actives for Skin Care

Product	INCI	Description	conc. %	Label
Allantoin	ALLANTOIN	soothing, repairing, anti-inflammation	0,1-0,4	
Biobloom™ Microbeauty ME-1	LACTOBACILLUS FERMENTATION LYSATES, PENTYLENE GLYCOL	Inhibit harmful bacteria, improve skin microbiota, improve skin oil secretion and pH imbalance, Strengthen skin microbial + immune barrier	0,5-5	COSMOS
Bioecto™	ECTOIN	Protects anti-stress ability of cells, prevents damage from UV and visible light, promotes collagen synthesis, inhibits release of inflammatory factors	0,1-2	COSMOS
Bioyouth™ Brice	SACCHAROMYCES/RICE FERMENT FILTRATE	Brown rice ferment filtrate, whitening, antioxidant, repair of skin barrier	0,5-4	COSMOS
Bioyouth™ EGT PRO	ERGOTHIONEINE, ARMILLARIA MATSUTAKE EXTRACT, HYDROLYSED SODIUM HYALURONATE, TREHALOSE	Pan-himalayan source, environment friendly, antioxidant, anti-photoaging, protect DNA and mitochondria, improve skin laxity and dullness; smooth wrinkle	0,1-0,5	COSMOS
Bioyouth™ EGT Pure	ERGOTHIONEINE	High efficiency in scavenging free radicals. Promote collagen synthesis. Anti aging, anti-oxidant products, skin protection, skin regeneration sun care products	0,01-0,02	
Bioyouth™ Natto	BACILLUS/SOYBEAN FERMENT EXTRACT	rich in plant collagen, soybean peptides, amino acids, vitamins, moisturizing, smoothing, improve skin texture, increase skin elasticity	0,5-2	COSMOS
Bioyouth™ SPG	SCHIZOPHYLLAN, 1,2-HEXANEDIOL, ETHYLHEXYLGLYCERIN, WATER	Prematurely aging skin induced by inflammation; repair of double damage from photoaging and oxidative stress; repeatedly fragile skin barriers caused by microecological imbalance	0,5-10	
Alpha-Bisabolol	BISABOLOL	anti-inflammation, skin regeneration, e.g. after-sun	0,5-1	
Coenzym Q10	UBIQUINONE	anti aging, cell protective	0,05-0,15	
Erytan	ERYTHRULOSE	long lasting tan	2-5	
Gabacare™ BL 98 T	AMINO BUTYRIC ACID	anti aging, anti wrinkle, synthesis of HA and collagen	0,05-0,3	COSMOS

Actives for Skin Care

Product	INCI	Description	conc. %	Label
Hyafactor™ - NAG	ACETYL GLUCOSAMINE	moisturizing, scavenge free radicals, whitening, natural exfoliating regulator, promotes HA synthesis	0,5-2	COSMOS
Hyafactor™ - PGA	SODIUM POLYGLUTAMATE	promotion of natural moisturizing factors in the skin, softness, reduces HA degradation, inhibit melanin production, different MG available	0,05-1	COSMOS
Hyalu-Beta™	PROPOSED: HYDROLYZED HYALURONIC ACID, BETAINE	Hyalu-Beta™, is based on Low Molecular Weight Hyaluronic Acid. It exhibits remarkable moisturizing properties stimulating the intradermal biosynthesis.	0,5-5	
Hyalugel™	GLYCOSAMINOGLYCANS	Hyalugel™, is based on Hyaluronan, obtained by enzymatical process. It exhibits remarkable moisturizing properties stimulating the intradermal biosynthesis.	0,5-5	
Pantrofina® Adimin RG	GLYCERIN, HYDROLYZED GLYCOSAMINOGLYCANS, RHEUM PALMATUM ROOT EXTRACT	Pantrofina® Adimin RG combines rhubarb extract with a delivery system selected to reach the deepest layers of the epidermis, inhibiting lipogenesis and stimulating lipolysis by breaking down stored triglycerides: • Slimming	2	COSMOS; NATRUE
Pantrofina® Bakuclear RSPO MB	BUTYLENE GLYCOL, POLYGLYCERYL-10 LAURATE, CAPRYLYL/CAPRYL GLUCOSIDE, AQUA, BAKUCHIOL, SODIUM LAUROYL GLUTAMATE	The water-soluble Bakuchiol for clear and balanced skin. It is a clinically effective solution with a sebum-balancing effect and acne-prone skin support without irritation. • Decreases acne spot volume and area by 13%. • Reduces sebum by up to 15%, perfect for oily and combination skin.	4-6	NATRUE
Pantrofina® Baokiol RSPO MB	DICAPRYLYL ETHER, BAKUCHIOL, ADANSONIA DIGITATA SEED OIL	It is a powerful liposoluble Bakuchiol solution that offers the anti-aging benefits of Retinol without irritation. Its thermal stability, compatibility, and versatility make it a superior choice for anti-aging skincare. • Reduces wrinkles with zero irritation • Reduces skin roughness • High thermal stability: Ideal for solid, oil- and wax-based formulations	4-6	NATRUE
Pantrofina® Eyclight BH	ADANSONIA DIGITATA SEEDOIL, HELIANTHUS ANNUUS (SUNFLOWER) SEED OIL, HELICHRYSUM ANGUSTIFOLIUM FLOWER EXTRACT, BRASSICA OLERACEA ITALICA (BROCCOLI) SPROUT EXTRACT	A botanical complex, rich in vitamins and antioxidants able to fight the causes of puffiness and dark circles, working on the activation of blood-clotting proteins Function: • Anti dark circles • Anti eye bags	2	COSMOS; NATRUE

Actives for Skin Care

Product	INCI	Description	conc. %	Label
Pantrofina® Hydrafeel 3	POLYGLYCERYL-3 PCA	Texturizing and protective active ingredient for hair care, skin care and make up application. Thanks to its film-forming properties it shows several benefits: <ul style="list-style-type: none"> • Counteraction of TEWL • Improvement long lasting hair color (in hair dye treatment) • Skin feel improvement 	0,2-1	COSMOS; NATRUE
Pantrofina® J-Gravity	LAVANDULA HYBRIDA OIL, CAMELLIA SINENSIS EXTRACT	A combination of bancha tea flavonoids and the cell-carrier technology of lavender EO to combat the effects of gravity: <ul style="list-style-type: none"> • Anti sagging • Face-contour redefying • Anti wrinkle 	1	COSMOS; NATRUE
Pantrofina® Klamath	DEXTRIN, APHANIZOMENON FLOSAQUAE EXTRACT, SODIUM BENZOATE, POTASSIUM SORBATE	It is an innovative active ingredient from sweet water Klamath algae, for anti-inflammaging and photoaging protection for resilient and glowing skin. <ul style="list-style-type: none"> • Anti-inflammation activity • Protection from UV radiation • Protection from Blue Light 	0,2	COSMOS; NATRUE
Pantrofina® Perfection	AMMONIUM GLYCYRRHIZINATE, MANNITOL, ARGININE, NIACINAMIDE, CALCIUM PANTOTHENATE, FAEX EXTRACT, ALLANTOIN, THREONINE, BIOTIN	Complex of essential micro-nutrients with a bio-modulating effect that stimulates metabolic activity of fibroblasts and promotes skin elasticity. <ul style="list-style-type: none"> • Increasing skin elasticity • Reducing hair loss • Respecting skin microbiome • Boosting cellular activity 	1,25	
Pantrofina® Remedy	PROPYLENE GLYCOL, UNDECYLENIC ACID, ARGININE, SALICYLIC ACID, AQUA	Active complex with a proven anti-dandruff and anti-itch activity <ul style="list-style-type: none"> • Anti dandruff • Anti itching • Preservative booster 	1	
Pantrofina® Reshape	GARCINIA CAMBOGIA FRUIT EXTRACT, ARGININE, ESCIN, GLUTAMINE, AQUA	Caffeine-free slimming and anticellulite botanical active ingredient based on Garcinia Cambogia fruit extract, escin and amino acid complex <ul style="list-style-type: none"> • Slimming • Anticellulite • Firming 	4	
Pantrofina® Skin 360 MB	DIGLYCERIN, PINUS PINASTER EXTRACT	Botanical Active ingredient obtained from the bark of Maritime Pine. Effective antipollution agent, it is a potent soothing active and radical scavenger too, specific for photo ageing prevention. <ul style="list-style-type: none"> • Anti-pollution • Soothing • Antioxidant 	1	COSMOS; NATRUE

Actives for Skin Care

Product	INCI	Description	conc. %	Label
Pantrofina® Skin DNA	LECITHIN, RUTIN	A complex of Rutin, a derivative saponin extracted from the Ruta graveolens L., and a skin identical phospholipid that enhances the delivery through a carrier effect • Anti-ageing • Anti-oxidant • DNA protection	2	
PuraBeet® Betaine An-hydrous 99%	BETAINE	100%ig plant based, upcycling from sugar production, foam enhancer, hydration, protects skin barrier, anti skin irritation, sensorial booster	1-5	COSMOS; NATRUE
Silkelide™	PROPOSED: AQUA, POLYGLYCERYL-4 OLEATE, GLYCERYL OLIVATE, HYDROGENATED RAPESEED ALCOHOL, POLOXAMER 338, PPG51/SMDI COPOLYMER	Silkelide™ is a multi active ingredient for cosmetic application, e.g. SPF booster, thickener, thin film former for anti-pollution effects, co-emulsifier	5	
Silkelide™ C	PROPOSED: AQUA, POLOXAMER 338, PPG51/SMDI COPOLYMER, BETAINE	Silkelide™ C it's able to form a light, elastic and silky film which protect skin and hair from pollution, giving a very nice touch to the finish product	5-20	
Silkelide™ HG	POLYGLYCERIN 3, PCA, BETAINE, COCONUT ACIDS	Silkelide HG is a high performing natural quaternary compound, based on vegetable derived raw materials. It can be used as an active product in skin care preparation, thanks to its high moisturizing property and its good water affinity.	1-10	
HYDRESIA™ SF2	CARTHAMUS TINCTORIUS (SAFFLOWER) OLEOSOMES (AND) WATER	Shows good disciplining and smoothing effect. Reduces volume without weighing down hair. In synergy with cationic guar gum (smoothing and conditioning effect)	5-15	COSMOS
Hyanutra™-RH Hair Nourishing Shield	SACCHAROMYCES/RICE FERMENT FILTRATE, PENTYLENE GLYCOL, PROPANEDIOL, SODIUM HYALURONATE, BUTYLENE GLYCOL, HYDROLYZED SODIUM HYALURONATE	Hyanutra™ contains a poly-saccharide polymer of different molecular weights. High MW Hyaluronic acid is film forming and lubricates hair surface for improved smoothness. It gives hair better styling durability in hot straightening scenarios.	1-30	
Pantrofina® Ganother	GLYCERINE, WATER, GANODERMA LUCIDUM (MUSHROOM) MYCELIUM FERMENT FILTRATE	Phytocomplex based on the "the mushroom of immortality", containing a high amount of ganoderic acid. It works on scalp hair cells reducing hair loss and stimulating the cellular renewing. • Long lasting anagen phase • Healthy hair • Hair strength improvement • Hair fall prevention	2	COSMOS



Actives for Hair Care

Product	INCI	Description	conc. %	Label
INAWAVE® POLYPORUS	WATER, GLYCERIN, POLYPORUS UMBELLATUS EXTRACT, POTASSIUM SORBATE	It increases hair growth and density and prevents hair fall, improving at the same time the well-being in general. Recommended dose: up to 6%; ISO 16128 NI:0,70 NDI:0,99; CHINA INCI	up to 6%	COSMOS
Pantrofina® Hair Therapy	TUSSILAGO FARFARA EXTRACT, ACHILLEA MILLEFOLIUM EXTRACT, CINCHONA SUCCIRUBRA EXTRACT, SODIUM BENZOATE, POTASSIUM SORBATE	Complex of water-soluble plant extracts whose combined action helps to reduce hair loss. For the health and wellbeing of the scalp. • Anti-Hair Loss • Anti-itching	10	COSMOS
Pantrofina® Hydrafeel 3	POLYGLYCERYL-3 PCA	Texturizing and protective active ingredient for hair care, skin care and make up application. Thanks to its film-forming properties it shows several benefits: • Counteraction of TEWL • Improvement long lasting hair color (in hair dye treatment) • Skin feel improvement	0,2-1	COSMOS; NATRUE
Pantrofina® Perfection	AMMONIUM GLYCYRRHIZINATE, MANNITOL, ARGININE, NIACINAMIDE, CALCIUM PANTOTHENATE, FAEX EXTRACT, ALLANTOIN, THREONINE, BIOTIN	Complex of essential micro-nutrients with a bio-modulating effect that stimulates metabolic activity of fibroblasts and promotes skin elasticity. • Increasing skin elasticity • Reducing hair loss • Respecting skin microbiome • Boosting cellular activity	1,25	
Pantrofina® Remedy	PROPYLENE GLYCOL, UNDECYLENIC ACID, ARGININE, SALICYLIC ACID, AQUA	Active complex with a proven anti-dandruff and anti-itch activity • Anti dandruff • Anti itching • Preservative booster	1	
PuraBeet® Betaine Anhydrous 99%	BETAINE	100%ig plant based, upcycling from sugar production, foam enhancer, improves hair strength, shine and soft feel, prevents water loss	1-5	COSMOS; NATRUE
Purakan™	WATER, GLYCERIN, LAURYL GLUCOSIDE, PROPANDIOL, PUNICA GRANATUM PERICARP EXTRACT, CARUM COPTICUM FRUIT EXTRACT, MENTHA ARVENSIS LEAF OIL	It is an innovative natural solution against dandruff. Benefits: controls proliferation of <i>Malassezia furfur</i> , reduces itchiness; fights inflammation; naturally rebalances scalp microflora; water-soluble; good compatibility in surfactants, emulsions, and water-based serums. Dosage: - Liquid/Solid Shampoo: 2% - Leave on formulations: 1%	1-2	COSMOS
Resolving® Hair	AQUA , DIPROPYLENE GLYCOL, POLYGLYCERYL-3 COCOATE, ISOPROPYL MYRISTATE, POLYGLYCERYL-10 LAURATE, POLYQUATERNIUM-80	Water-soluble. It can be added at any stage of the formulation, both hot and cold. Stable at 3.5<pH<8.0. Suitable for clear shampoo and microemulsion. Excellent conditioning and combing effect. Replacement for silicones.	1-10	

Actives for Hair Care

Product	INCI	Description	conc. %	Label
Sharofeel DS	Dioctylododecyl Succinate	It gives the texture a dry feel, good spreadability and a silky finish. Its high thermal stability allows it to be used as a protective agent in pre-heating hair products. 100% natural		NATRUE
Sharohyal® Moringa	Glycerin, Aqua, Moringa Oleifera Seed Extract, Sodium Hyaluronate	A combination of a low molecular weight hyaluronic acid and Moringa micro-proteins provides a repairing care for damaged hair.	2	NATRUE
Silkelide™ HG	POLYGLYCERIN 3, PCA, BETAINE, COCONUT ACIDS	Silkelide HG is a high performing natural quaternary compound, based on vegetable derived raw materials. It is used to fight dry, brittle and damaged hair, like shampoos, hair conditioners, hair mask and so on, or when is wanted to increase an emollient feeling.	3-15	

Actives - Extracts

Product	INCI	Description	conc. %	Label
Angelica Polymorpha Sinensis Root Extract	GLYCERIN, WATER, ANGELICA POLYMORPHA SINENSIS ROOT EXTRACT	Multifunctional agent for inflamed skin. Stimulates blood flow; Anti-aging effect; Soothes redness and irritation	0,5-2	COSMOS
Chrysanthemum Indicum Flower Extract	CHRYSANTHEMUM INDICUM FLOWER EXTRACT	Skin protection against pollution-related skin excessive responses. Counters UV induced redness and irritation; Counters oxidative stress induced by pollutant	0,5-2	COSMOS
Botaniplex™ BALANCE SA	GLYCERIN, WATER, AILANTHUS ALTISSIMA BARK EXTRACT, SANGUISORBA OFFICINALIS ROOT EXTRACT	Immune balance and support. Dual effect on bacterial growth. Microbiome balance - Preserves commensal (bacteria (prebiotic activity) – novel patented finding. Inhibitory effect on pathogenic bacteria; Immune balance; Anti-oxidative; Anti-itch	0,2-1	COSMOS
Botaniplex™ BALANCE SC	GLYCERIN, WATER, PHELLODENDRON CHINENSE BARK EXTRACT, CHRYSANTHEMUM INDICUM FLOWER EXTRACT	Microbiome balance - Preserves commensal bacteria (prebiotic activity) – novel patented finding. Inhibitory effect on pathogenic bacteria; Sebum regulation; Anti-oxidative	2-5	COSMOS
Botaniplex™ CALM 4	GLYCERIN, WATER, RHEUM PALMATUM ROOT EXTRACT, SCUTELLARIA BAICALENSIS ROOT EXTRACT, GLYCYRRHIZA GLABRA (LICORICE) ROOT EXTRACT, CNIDIUM MONNIERI FRUIT EXTRACT	This extract inhibits hyaluronidase, helping to keep the skin moist and supple. Additionally, it is a strong inhibitor of tyrosinase. Anti-aging effect; Moisture preservation; Anti-pigmentation; Anti-inflammatory; Anti-oxidative	1-4	COSMOS

Actives - Extracts

Product	INCI	Description	conc. %	Label
Botaniplex™ CLEAR	GLYCERIN, WATER, PHELLODENDRON CHINENSE BARK EXTRACT, SANGUISORBA OFFICINALIS ROOT EXTRACT, RHEUM PALMATUM ROOT EXTRACT, PORTULACA OLERACEA EXTRACT, CHRYSANTHEMUM INDICUM FLOWER EXTRACT, SCUTELLARIA BAICALENSIS ROOT EXTRACT	Synergistic herbal compositions with prebiotic properties for applications on oily skin conditions. Clear spots; Reduces redness and irritation; Microbiome balance; Anti-inflammatory	1-12	COSMOS
Botaniplex™ GUARD 2	GLYCERIN, WATER, CHRYSANTHEMUM INDICUM FLOWER EXTRACT, RHEUM PALMATUM ROOT EXTRACT	Synergistic botanical blends for intimate care wash/applications	1-3	COSMOS



Actives – Extracts

Product	INCI	Description	conc. %	Label
Botaniplex™ GUARD 3	GLYCERIN, WATER, CHRYSANTHEMUM INDICUM FLOWER EXTRACT, SANGUISORBA OFFICINALIS ROOT EXTRACT, RHEUM PALMATUM ROOT EXTRACT	Synergistic botanical blends for application on chapped and redness lips. Soothes redness; Alleviates lip irritation; Microbiome balance; Anti-inflammatory	1-3	COSMOS
Glycyrrhiza Glabra (Licorice) Root Extract	GLYCERIN, WATER, GLYCYRRHIZA GLABRA ROOT EXTRACT	Multifunctional agent for inflamed skin. Soothes redness and itchiness; Anti-itch; Microbiome balance; Lightening effect	0,5-2	COSMOS
Portulaca Oleracea Extract	GLYCERIN, WATER, PORTULACA OLERACEA EXTRACT	Assistance in skin recovery after skin burns. Soothes redness and itchiness; Reduces risk of fungal infection	1-4	COSMOS
Sapindus Mukorossi Fruit Extract	GLYCERIN, WATER, SAPINDUS MUKOROSSI FRUIT EXTRACT	Properties of the plant are as cleanser / surfactant, foaming agent, anti-fungal and non-irritant. Applications for: Skin Care, Scalp Care Cleansers, Shampoos, Creams, Lotions, and Gels	0,5-2	COSMOS

Actives - Hyaluronic Acid

Product	INCI	Description	conc. %	Label
Biomeet™ EncapCare VCIP	AQUA, CAPRYLIC/CAPRIC TRIGLYCERIDE, GLYCERIN, ASCORBYL TETRAISOPALMITATE, SODIUM SURFACTIN, PROPANEDIOL, 1,2-HEXANEDIOL, RASPBERRY KETONE	Green delivery, an innovative solution for enhancing Vitamin C efficacy; higher stability, powerful penetration, high-efficiency whitening, very high embedding rate; for lotions, essences, creams and other personal care products with whitening and anti-aging effects	1-20	
Bio moist™ Hyaluronic Acid	HYALURONIC ACID	for oral care, reduce inflammation, repairing, improve dry mouth	0,05-0,5	COSMOS
Bio moist™ SrSoothing	ALGIN, SODIUM HYALURONATE, STRONTIUM ACETATE	resist saliva erosion, relieve tooth sensitivity, high safety, rapid durable film-forming; for oral care products such as toothpaste, tooth patches, and oral gels.		
cationHA™ G	SODIUM HYALURONATE, GUAR HYDROXYPROPYLTRIMONIUM CHLORIDE, PROPYLENE GLYCOL, PHENOXYETHANOL, ETHYLHEXYL- GLYCERIN, CITRIC ACID, WATER	high substantivity, reduce the irritancy, scalp care	0,5-1	

Actives - Hyaluronic Acid

Product	INCI	Description	conc. %	Label
cationHA™-clear1	HYDROLYZED SODIUM HYALURONATE, SODIUM HYALURONATE, POLYQUATERNIUM-10, GLYCERIN, PHENOXYETHANOL, ETHYLHEXYLGLYCERIN, WATER	high substantivity, reduce the irritancy, scalp care; perfect for clear formulations	0,5-1	
Hyacolor™	SODIUM HYALURONATE, RICINUS COMMUNIS (CASTOR) SEED OIL, HYDROGENATED CASTOR OIL	oil dispersed Sodium Hyaluronate, lip plumping, repairing, moisturizing	0,1-2	COSMOS
Hyacolor™ LA	SODIUM HYALURONATE, LIMNANTHES ALBA (MEADOWFOAM) SEED OIL, GLYCERYL BEHENATE	oil dispersed Sodium Hyaluronate, lip plumping, repairing, moisturizing	0,3-2	COSMOS
Hyacolor™ 3D	SODIUM HYALURONATE, HYDROLYZED SODIUM HYALURONATE, RICINUS COMMUNIS (CASTOR) SEED OIL, HYDROGENATED CASTOR OIL	oil dispersed Sodium Hyaluronate, lip plumping, repairing, moisturizing	0,1-2	
Hyacross™ TL100/TG100	SODIUM HYALURONATE CROSSPOLYMER, PENTYLENE GLYCOL, AQUA	protects against UV and air pollution, biofilm, water binding capacity, long lasting moisturizing; TG100 contains visible HA-droplets	TL100: 1-5; TG100: 0,05-2	
Hyacross™ Microbeads TG300	Sodium Hyaluronate Crosspolymer	crystal Hyaluronic Acid microbeads with high elasticity, gentle exfoliating, degradable, around 400 µm	0,3-3 Face 1-5 Body	
Hybloom® Sodium Hyaluronate, HA-TLM, low molecular weight, 10-50 KDa	SODIUM HYALURONATE	moisturizing factor, film forming, prevent and repair skin damage, anti aging	0,1-0,5	COSMOS
Hybloom® Sodium Hyaluronate, HA-TLM, low molecular weight, 100-250 KDa	SODIUM HYALURONATE	moisturizing factor, film forming, prevent and repair skin damage, anti aging	0,1-0,5	COSMOS
Hybloom® Sodium Hyaluronate, middle molecular weight, 0,4-0,6 MDa	SODIUM HYALURONATE	moisturizing factor, film forming, prevent and repair skin damage, anti aging	0,1-0,5	COSMOS
Hybloom® Sodium Hyaluronate, high molecular weight, 1,0-1,3 M Dalton	SODIUM HYALURONATE	moisturizing factor, film forming, prevent and repair skin damage, anti aging	0,1-0,5	COSMOS
Hybloom® Sodium Hyaluronate, HA-T, high molecular weight, 1,5-1,8 M Dalton	SODIUM HYALURONATE	moisturizing factor, film forming, prevent and repair skin damage, anti aging	0,1-0,5	COSMOS

Actives - Hyaluronic Acid

Product	INCI	Description	conc. %	Label
Hybloom [®] Oligo (HA-Oligo)	HYALURONIC ACID	moisturizing factor, film forming, prevent and repair skin damage, anti aging, M < 10 KDa	0,1-0,5	COSMOS
Hybloom [™] Minitrue	HYDROLYZED SODIUM HYALURONATE	Hybloom [™] Minitrue is the new generation of micromoleccular HA with molecular weight less than 1000 Da produced by a patent enzyme degradation technology. Promotion of collagen synthesis in fibroblasts cells. Also promotion of ceramide synthesis.	0,1-0,5	
Hybloom [™] Zinc Hyaluronate	ZINC HYDROLYZED HYALURONATE	Hybloom [™] Zinc Hyaluronate is the perfect combination of HA and Zinc with both efficacies which is developed by a patented technology. It not only has the characteristics of moisturizing, repairing and nourishing of HA, but also has the functions of anti-oxidation and soothing of Zinc.	0,1-1,0	
microHA [™] Super Active HA	HYDROLYZED SODIUM HYALURONATE	transdermal absorption, repair skin cells, deep hydrating, sensitive skin, anti-inflammatory, antioxidant, degraded by hyaluronidase, M < 5 KDa	0,05-0,5	COSMOS
miniHA [™] HA-Oligo	HYDROLYZED SODIUM HYALURONATE	transdermal absorption, repair skin cells, deep hydrating, degraded by hyaluronidase, M < 10 KDa	0,1-0,5	COSMOS
Hymagic [™] AcHA	SODIUM ACETYLATED HYALURONATE	superb moisturization, skin barrier repair, improves skin elasticity, high skin affinity and adsorption to skin surface (lipophilic acetyl group)	0,01-0,1	
Hymagic [™] 4D	SODIUM HYALURONATE CROSSPOLYMER, SODIUM HYALURONATE, SODIUM ACETYLATED HYALURONATE, HYDROLIZED SODIUM HYALURONATE, PENTYLENE GLYCOL, ETHYLHEXYLGLYCERIN, AQUA	Combination of 4 types of Sodium Hyaluronate with activity in different skin layers, replenishes water from outside and holds water from inside	1-10	
Hymagic [™] -GluHA	SODIUM N-HYALURONOYL GLUTAMATE	It accelerates the reconstruction and repair of damaged skin, strengthens the newly-formed skin, and revitalizes the damaged skin, endowing it with new life and vitality. For sensitive skin, acne-prone skin, and fragile barrier skin.	0,01-0,5	

Also available: HAPLEX[®] - Food Grade Sodium Hyaluronate with different molecular weights

Actives - Hyaluronic Acid based blends – “Sharohyal”- product line

Product	INCI	Description/Usage	conc. %	Label
Sharohyal® Buddleja Cell	GLYCERIN, AQUA, BUDDLEJA DAVIDII MERISTEM CELL CULTURE, HYDROLYZED GLYCOSAMINOGLYCANS	Antioxidant, anti-inflammatory, photo protective, moisturizing, protective and restructuring; Active matter 22-28%	0,5-2	COSMOS
Sharohyal® Centella Cell	GLYCERIN, AQUA, CENTELLA ASIATICA LEAF CELL CULTURE EXTRACT, HYDROLYZED GLYCOSAMINOGLYCANS	Antioxidant, anti-inflammatory, skin lightening, moisturizing, protective, restructuring; Active matter 32-35%	0,5-2	COSMOS
Sharohyal® Echinacea Cell	GLYCERIN, AQUA, ECHINACEA ANGUSTIFOLIA MERISTEM CELL CULTURE, HYDROLYZED GLYCOSAMINOGLYCANS	Moisturizing, protective, restructuring, stimulates the production of collagen; Active matter 20-30%	0,5-2	COSMOS
Sharohyal® Glycacid ECO	GLYCERIN, HYDROLYZED GLYCOSAMINOGLYCANS	Whenever a deep-penetrating active ingredient is needed; Creams and serums anti-age; Active matter 46%	0,5-5	COSMOS; NATRUE
Sharohyal® Glycocare	AQUA, GLYCOPROTEIN, GLYCERIN, SODIUM HYALURONATE, HYDROLYZED GLYCOSAMIN-GLYCANS, COPPER GLUCONATE, SODIUM PCA	Gel and cream antiaging; Antiacne cosmetics; Anti stretchmarks creams and lotions; After surgery cosmetics	0,6-3	
Sharohyal® Leontopodium Cell	GLYCERIN, AQUA, LEONTOPODIUM ALPINUM MERISTEM CELL CULTURE EXTRACT, HYDROLYZED GLYCOSAMINOGLYCANS	Antiage emulsions and lotions Sensitive skin; Active matter 32-35%	0,5-2	COSMOS
Sharohyal® LW	GLYCERIN, HYDROLYZED GLYCOSAMINOGLYCANS, HYALURONIC ACID	Whenever a deep-penetrating active ingredient is needed; Creams, serums, moisturizing gels; Active matter 47%	0,5-5	COSMOS; NATRUE
Sharohyal® Marine	AQUA, GLYCERIN, MACROCYSTIS PYRIFERA EXTRACT, HYALURONIC ACID	Lifting, firming and elasticizing activity of the skin; Active matter 10-18%	1-5	COSMOS
Sharohyal® Matrix	WATER, SODIUM HYALURONATE CROSSPOLYMER, PROPANEDIOL, GLYCERIN, HYDROLYZED GLYCOSAMINOGLYCAN, SODIUM HYALURONATE, HYDROLYZED HYALURONIC ACID, HYALURONIC ACID	Compound solution for wrinkles and moisturizing is made of 5 complex hyaluronic acid materials with various sizes and characteristics.	0,5-1,5	
Sharohyal® Moist	WATER, SODIUM HYALURONATE CROSSPOLYMER	Skin cream; Lotion; Treatments products; Body care products; Sun care; Make-up foundation	0,5-1,5	
Sharohyal® Moist PHA	WATER, SODIUM HYALURONATE CROSSPOLYMER, MANDELIC ACID, GLUCONOLACTONE, LACTOBIONIC ACID	Surface skin renewal; Skin lightening improvement; Skin brightening improvement; Spots treatment; Face signs treatment	5-10	

Actives - Hyaluronic Acid based blends – “Sharohyal”- product line

Product	INCI	Description/Usage	conc. %	Label
Sharohyal® Moringa	GLYCERIN, AQUA, MORINGA OLEIFERA SEED EXTRACT, SODIUM HYALURONATE	Creates a protective layer that simultaneously protects the hair fiber, provides natural moisture and seals the cuticle thanks to hyaluronic acid, repairing it from within and making it stronger and more resistant.	2	COSMOS; NATRUE
Sharohyal® Oligo	AQUA, GLYCERIN, TREMELLA FUCIFORMIS (MUSHROOM) EXTRACT, LENTINUS EDODES EXTRACT, COPPER PCA, ZINC PCA	Treatment of oily skin; Greasy hair conditioner; Anti- ageing; Water soluble; Stable until 80°C; Not compatible with Dehydroacetic acid; Active matter 10%	0,5-4	
Sharohyal® Rice	AQUA, GLYCERIN, HYDROLYZED GLYCOSAMINOGLYCANS, HYDROLYZED RICE PROTEIN, HYALURONIC ACID	Hair and scalp treatment; Skin velvet effect; Active matter 10-22%	1,5-3	COSMOS; NATRUE
Sharohyal® Xantine	GLYCERIN, AQUA, HYDROLYZED GLYCOSAMINOGLYCANS, CAFFEIN, THEOBROMIN	Sport creams; Active matter 12-13%	1-5	



Amino Acids

Product	INCI	Description
Glycine BP/EP/USP	GLYCINE	antistatic, buffering, hair conditioning, skin conditioning
L-Alanine	ALANINE	antistatic, hair conditioning, masking, skin conditioning
L-Arginine HCl	ARGININE HCL	skin conditioning
L-Cysteine HCl	CYSTEINE HCL	antioxidant, hair conditioning, hair waving or straightening
L-Glutamic Acid	GLUTAMIC ACID	antistatic, hair conditioning, humectant
L-Valine	VALINE	hair conditioning, masking, skin conditioning
Taurine	TAURINE	buffering, hair conditioning

Dispersing Agents – “green” Alternatives to volatile D4/D5 Silicon Oils

Product	INCI	Description
Gilsolide® CN	POLYGLYCERYL-4 OLEATE, GLYCERYL OLIVATE, C13-14 ALKANE	Gilsolide® CN is manufactured from vegetable-derived raw materials and completely biodegradable. It imparts dry and silky textures and thanks to the presence of Olive Oil derivatives it is also very appreciated for its moisturizing properties.
Gilsolide® CS	C15-19 ALKANE, DICAPRYLYL ETHER, OLIVE OIL	Gilsolide® CS is a mix of vegetable components derived from food grade Brassica Campestris (Rapeseed) seed oil and Olea Europea (Olive) Fruit Oil and Dicaprylyl Ether, with similar properties to volatile silicon oil.
Gilsolide® DM	C9-12 ALKANE, COCO CAPRYLATE CAPRATE, POLYGLYCERYL-4 OLEATE	Gilsolide® DM was engineered as a high-performance, sustainable response to the cosmetic industry's reliance on Dimethicone. Color- & Odorless; Emollient and Soft Skin-Feel; Cushion Effect with non-greasy feel; compatible with UV-filters
Gilsolide® ECN	POLYGLYCERYL-4 OLEATE, GLYCERYL OLIVATE, C13-14 ALKANE	Gilsolide® ECN is a mix of vegetable components derived from food grade Brassica Campestris (Rapeseed) seed oil and Olea Europea (Olive) Fruit Oil with similar properties to silicon oil, Squalane and light esters.
Gilsolide® HVN	C13-14 ALKANE, POLYGLYCERYL-4 OLEATE, GLYCERYL OLIVATE	Gilsolide® HVN is a highly dry and spreading emollient oil, manufactured from vegetable-derived raw materials and completely biodegradable. Gilsolide® HVN it's also a very good dispersing agent for sun filters.
Gilsolide® VN	C13-14 ALKANE, POLYGLYCERYL-4 OLEATE, GLYCERYL OLIVATE	Gilsolide® VN is a mix of vegetable components derived from food grade Brassica Campestris (Rapeseed) seed oil and Olea Europea (Olive) Fruit Oil with similar properties to volatile silicon oil. Gilsolide® VN is a lighter oil compared to Gilsolide® CN and is used when higher volatility is needed.



Emollients			
Product	INCI	Description	Label
Gilsolide® CN	C13-14 ALKANE, POLYGLYCERYL-4 OLEATE, GLYCERYL OLIVATE	Gilsolide® CN is manufactured from vegetable-derived raw materials and completely biodegradable. It imparts dry and silky textures and thanks to the presence of Olive Oil derivatives it is also very appreciated for its moisturizing properties.	
Gilsolide® ECN	POLYGLYCERYL-4 OLEATE, GLYCERYL OLIVATE, C13-14 ALKANE	Gilsolide® ECN is a mix of vegetable components derived from food grade Brassica Campestris (Rapeseed) seed oil and Olea Europea (Olive) Fruit Oil with similar properties to silicon oil, Squalane and light esters.	
Gilsolide® HVN	C13-14 ALKANE, POLYGLYCERYL-4 OLEATE, GLYCERYL OLIVATE	Gilsolide® HVN is a highly dry and spreading emollient oil, manufactured from vegetable-derived raw materials and completely biodegradable. Gilsolide® HVN it's also a very good dispersing agent for sun filters.	
SHARODERM® DN MB	DIGLYCERIN	Moisturizing agent for skin care products (lotions, detergents, deodorants). Compared with glycerol it gives a non-sticky feeling and absorbs less water, more slowly, making the products more delicate.	COSMOS
SHAROFEEL® DS	DIOCTYLDODECYL SUCCINATE	100% natural origin, excellent sensory and organoleptic properties, odorless and colorless. It gives the texture a dry feel, good spreadability and a silky finish. Shows good performances in the dispersion of mineral pigments.	COSMOS; NATRUE
SHAROFEEL® LL	LAURYL LAURATE	Light ester from vegetable origin. It gives a soft and light skin feeling with good skin conditioning properties.	
SHAROFEEL® LO	LAURYL OLIVATE	Ester derived from olive oil. It is able to improve the skin feel due to its excellent spreading capability.	COSMOS
SHAROFEEL® OLIVE	OLEA EUROPAEA OIL UNSAPONIFIABLES	Unsaponifiable fraction of olive oils, rich in squalene and vegetable sterols. It has strong moisturizing and softening properties.	COSMOS

Emulsifiers				
Product	INCI	Description	HLB	Label
CAPSOL™	CARTHAMUS TINCTORIUS (SAFFLOWER) OLEOSOMES (AND) WATER	Natural and Multifunctional Sun Care Encapsulation and Delivery System. Lower levels of UV-filters are necessary. Emulsification up to three-times its weight in oil.	5-15; optimal range 8-13	COSMOS; NATRUE
Emugil K	POTASSIUM CETYL PHOSPHATE, PCA GLYCERYL OLEATE, CAPRYLYL/CAPRYL GLUCOSIDE	EMUGIL K is an anionic, skin friendly O/W emulsifier to manufacture light and soft emulsions.		
EMULPHARMA® HP RSPO MB	GLYCERYL STEARATE, CETEARYL ALCOHOL, STEARIC ACID, SODIUM LAUROYL GLUTAMATE	Sensory and versatile natural O/W emulsifier with excellent skin affinity, able to emulsify high amount of oil. Skin Care; Body Care; BB; CC; <ul style="list-style-type: none"> • Moisturizing • Pleasant and moisturizing skin feel 	9,0-9,5	COSMOS
EMULPHARMA® K9	SORBITAN OLIVATE	W/O primary emulsifier for fresh textures, even with high amount of oil. Natural Beauty; Sunscreen; Make Up; Baby Care <ul style="list-style-type: none"> • Shiny, creamy, and light touch 	4,0-4,5	COSMOS; NATRUE
EMULPHARMA® K10 RSPO MB	CETEARYL GLUCOSIDE, SORBITAN OLIVATE, CETEARYL ALCOHOL	Natural origin primary O/W emulsifier , with high performance in stability over time. AHA; BHA; Skin Care; Clean Beauty; Professional Beauty care <ul style="list-style-type: none"> • Rich but not greasy skin-feel 	7,0-8,0	COSMOS; NATRUE
EMULPHARMA® PG36 RSPO MB	POLYGLYCERYL 3 DISTEARATE, POLYGLYCERYL-6 TRISTEARATE, SORBITAN OLEATE, PALMITIC ACID, STEARIC ACID	Natural origin O/W emulsifier with versatile behaviour: from sprayable to solid emulsion. Natural Beauty; Body Lotion; Skin Care; Baby Care Sprays, Lotions, low-viscosity Fluids	6,0-7,0	COSMOS

Emulsifiers				
Product	INCI	Description	HLB	Label
EMULPHARMA® WW	OLIVE OIL PEG 7 ESTER, ETHYLHEXYL STEARATE, POLYGLYCERYL-3 POLYRICINOLEATE, SORBITAN OLEATE	A smart cold O/W emulsifier , ready and easy-to-use solution. Energy-saving emulsion procedure. Skincare & Body Care; Make-up; Energy saving beauty • Light and creamy texture.	7,0-8,0	
EMULPHARMA® WW GREEN	POLYGLYCERYL-4 CAPRATE, POLYGLYCERY-3 POLYRICINOLEATE, SORBITAN OLEATE, AQUA	A smart cold O/W emulsifier , ready and easy to-use solution, with natural origin. Energy-saving emulsion procedure. Skincare & Body Care; Sprays, Lotions, low-viscosity Fluids; Make-up; Energy saving beauty • Light and creamy texture.	8,5-9,5	COSMOS
EMULPHARMA® COREOSOME MB	CETEARYL ALCOHOL, GLYCERYL STEARATE, SORBITAN STEARATE, CETEARYL GLUCOSIDE	Sensory natural O/W emulsifier for Liquid crystal (oleosome) structure. Cleansing milks; BB, CC and general Skin Care creams; Sunscreens; • Long-lasting moisturisation efficacy • Light and Soft Skin feel	9,5	COSMOS
EMULPHARMA® CHROMA	LAURYL ALCOHOL, DI-C12-15 PARETH-4 PHOSPHATE, MYRISTYL ALCOHOL, CETETH-2	For de-lightful hair daily routine. O/W emulsifier . Professional Hair Care (developer, lightener, relaxer, dye); Professional Skin Beauty; Skinification of Hair Care; • AHA, H ₂ O ₂ , based • Sensory profile: neutral skin feel	8,5-9	
EMULPHARMA® EC010 MB	POLYGLYCERYL-10 LAURATE, AQUA	O/W Co-emulsifier with solubilizing properties ideal to stabilize foaming textures. Hair Care treatment; Sprays, Lotions, low-viscosity Fluids; Wet Wipes; Sustainable formulations (cold process); Products for Sensitive skin, Baby Care; Mild Cleansing products • Fluffy and creamy texture, • Vanishing textures	16,0-17,0	COSMOS; NATRUE

Emulsifiers				
Product	INCI	Description	HLB	Label
EMULPHARMA® ECOTECH MB	POLYGLYCERYL-3 COCOATE, AQUA	Natural liquid O/W emulsifier. Ideal for challenging formulations - low viscosity and hyperfluid emulsions. Special solution for oil-based Blooming textures. O/W emulsions; Sprays, Lotions, low-viscosity Fluids; Wet Wipes; Gel Creams; Blooming Bath Oils. Blooming Texture; Sustainable formulations (cold process) Sensory Profile: light, dry skin feel emulsions. Blooming textures	8,0	COSMOS; NATRUE
EMULPHARMA® MIMESIS RSP0 MB	GLYCERIN, POLYGLYCEROL-3 COCOATE, LECITHIN, HYDROGENATED LECITHIN, AQUA	O/W emulsifier. A real multitasking ingredient: it is able to form skin-like structures becoming a real carrier for active ingredients: beauty-driver Skincare & Body Care; Sensitive Skin; Sprays, Lotions, low-viscosity Fluids; <ul style="list-style-type: none"> • Energy saving beauty • Light and creamy texture. 	8,5-9,5	COSMOS; NATRUE
HYDRESIA™ DULCE	PRUNUS AMYGDALUS DULCIS (SWEET ALMOND) OLEOSOMES (AND) WATER	A multi-purpose structured system that acts as an emulsifier in the formulation, emollient on the skin and conditioning on the hair.		COSMOS
HYDRESIA™ G2	CARTHAMUS TINCTORIUS (SAFFLOWER) OLEOSOMES (AND) GLYCERIN (AND) WATER	A multi-purpose structured system that acts as an emulsifier in the formulation, emollient on the skin and conditioning on the hair.		COSMOS
HYDRESIA™ SF2	CARTHAMUS TINCTORIUS (SAFFLOWER) OLEOSOMES (AND) WATER	A multi-purpose structured system that acts as an emulsifier in the formulation, emollient on the skin and conditioning on the hair.	5-15	COSMOS; NATRUE
OLEAGIL	GLYCERYL OLIVATE	OLEAGIL is a high-performance co-emulsifier , emollient, and moisturizing agent specifically developed to suit even the most sensitive skin types.		
Theomulse™ N	THEOBROMA CACAO (COCOA) SEED BUTTER, GLYCERYL STEARATE, POLYGLYCERYL-4 OLEATE, SODIUM LAUROYL GLUTAMATE	Theomulse™ N is a skin friendly, non-ionic O/W emulsifier , 100% from vegetable raw materials, environmentally friendly. It is popular in the cosmetic industry to produce soaps, creams and detergents, due to its velvety texture and its emollient properties.		
Theomulse™ OE	THEOBROMA CACAO (COCOA) SEED BUTTER, GLYCERYL OLIVATE, POLYGLYCERYL-4 OLEATE	Theomulse™OE is a nonionic , skin friendly, palm free, vegetable derived surfactant to manufacture emulsions. Recommended for the prevention and treatment of skin issues as chapped lips and dry skin.		

Extracts (Biotech)

Product	INCI	Description	Label
INAWAVE® BIOTECHEMP	WATER, PENTYLENE, CANNABIS SATIVA ROOT EXTRACT	Combining advanced plant biotechnology and microwave-assisted extraction, this cannabisin-rich ingredient supports the longevity of the skin by maintaining proteostasis, stimulating autophagy and protecting against senescence. Recommended dose: 1-3%; ISO 16128 NI:0,70 NDI:1	COSMOS

Extracts (Eco-friendly actives)

Product	INCI	Description	Label
INAWAVE® POLYPORUS	WATER, GLYCERIN, POLYPORUS UMBELLATUS EXTRACT, POTASSIUM SORBATE	It increases hair growth and density and prevents hair fall, improving at the same time the well-being in general. Recommended dose: up to 6%; ISO 16128 NI:0,70 NDI:0,99; CHINA INCI	COSMOS
INAWAVE® POLYPORUS	WATER, GLYCERIN, POLYPORUS UMBELLATUS EXTRACT, POTASSIUM SORBATE	It increases hair growth and density and prevents hair fall, improving at the same time the well-being in general. Recommended dose: up to 6%; ISO 16128 NI:0,70 NDI:0,99; CHINA INCI	COSMOS
INAWAVE® STEMONA	WATER, PROPANDIOLE, STEMONA TUBEROSA ROOT EXTRACT	It is able to reduce the levels of reactive oxygen species and to restore collagen synthesis and cell proliferation depressed by an induced mitochondrial stress in fibroblasts. Recommended dose: 1-3%; ISO 16128 NI:0,70 NDI:0,99; CHINA INCI	COSMOS

Extracts (Upcycled)

Product	INCI	Description	Label
INAWAVE® ALFALFA SEEDS	GLYCERIN, WATER, MEDICAGO SATIVA (ALFALFA) SEED EXTRACT	It revitalizes the skin; moisturizes and improves the skin barrier. Recommended dose: up to 1%; ISO 16128 NI:0 NDI:1; CHINA INCI	COSMOS
INAWAVE® ALMOND SHELL	GLYCERIN, WATER, PRUNUS AMYGDALUS DULCIS (SWEET ALMOND) SEEDCOAT EXTRACT	Extracted using an energy-saving process, they offer antioxidant and anti-inflammatory active ingredients, promoting skin health. Recommended dose: 1%; ISO 16128 NDI:1; CHINA INCI	COSMOS
INAWAVE® CARROT SEEDS	GLYCERIN, WATER, DAUCUS CAROTA SATIVA (CARROT) SEED EXTRACT	Moisturizing, invigorating and revitalizing the skin, helps reduce inflammation and protects the skin from harmful environmental factors. Recommended dose: up to 3%; ISO 16128 NI:0 NDI:1; CHINA INCI	COSMOS

Extracts (Upcycled)

Product	INCI	Description	Label
INAWAVE® CHESTNUT BARK	GLYCERIN, WATER, CASTANEA SATIVA (CHESTNUT) BARK EXTRACT, SODIUM BENZOATE	Rich in antioxidants, it supports the protection and hydration of the skin. Recommended dose: 1-3%; ISO 16128 NDI:0,997; CHINA INCI	COSMOS
INAWAVE® GRAPEVINE	PROPYLENE GLYCOL, WATER, VITIS VINIFERA (GRAPEVINE) EXTRACT	Contains anti-microbial components (e.g., against S. aureus), promotes skin regeneration. Recommended dose: up to 2%; ISO 16128 NDI:1; CHINA INCI	COSMOS
INAWAVE® LEONURUS	WATER, BUTYLENE GLYCOL, LEONURUS JAPONICUS EXTRACT	Studies have shown that Leonurus japonicus extract has a strong antioxidant effect, surpassing that of vitamins E or C. These antioxidant properties help combat free radicals and maintain a healthy skin barrier, thereby reducing oxidation and water loss. Recommended dose: 1-3%; ISO 16128 NI:0,70 NDI:1; CHINA INCI	COSMOS
INAWAVE® LIQUORICE LEAF	GLYCERIN, WATER, GLYCYRRHIZA GLABRA (LICORICE) LEAF EXTRACT	Offers anti-inflammatory and antioxidant effects, ideal for sensitive skin. Recommended dose: 1-3%; ISO 16128 NDI:1; CHINA INCI	COSMOS

Kaolin and Mica

Product	INCI	Description	Properties	Label
CAOLIN G-30M CG	KAOLIN	Kaolin is a naturally occurring mineral. Kaolin is separated by washing, concentrated in clarifiers and then obtained in solid phase by a press filter. Pure Kaolin is dried in rotary dries. Kaolin is grinded to obtain the necessary granulometric selections. Kaolin is a white, soft, plastic clay mainly composed of fine-grained plate-like particles. Functions: Abrasive – Absorbent – Anticaking – Bulking – Colorant – Opacifying	fine white/yellow powder; oil adsorption 59 g/100 g; bulk density 250 g/cm ³ ; +53 μm; brightness 80 ± 2	COSMOS; NATRUE
CAOLIN G-35M CG	KAOLIN		fine white powder; oil adsorption 56g/100 g; bulk density 250 g/cm ³ ; +53 μm; brightness 74 ± 4	COSMOS; NATRUE
MICAVI 10 CG	MICA	Veneta Mineraria delivers high-quality natural Mica Muscovite, sustainably and ethically sourced from primary deposits in the North-West of Spain. MICAVI CG powders are designed to supply balance and to improve spreadability, slip and skin feel to a variety of cosmetic products while remaining translucent. Functions: Anticaking – Bulking – Colorant – Opacifying	3-18 μm; white-off fine powder	COSMOS
MICAVI 20 CG	MICA		5-25 μm; white-off fine powder	COSMOS; NATRUE
MICAVI 45 CG	MICA		5-50 μm; transparent, white-off fine powder	COSMOS
MICAVI 75 CG	MICA		10-60 μm; transparent, white-off fine powder	COSMOS; NATRUE
MICAVI 150 CG	MICA		10-110 μm; transparent, white-off fine powder	COSMOS

Natural or Organic Oils

Product	INCI	Description	Sensoric Properties	Label
Amaranth Oil	AMARANTHUS CAUDATUS SEED EXTRACT	skin conditioning, moisturizing, antiaging, hair-conditioning, damaged skin, rich in squalene and linoic acid, contains natural alpha-Tocopherol		
Apricot Seed Oil Refined conventional	PRUNUS ARMENIACA KERNEL OIL	skin conditioning, fragrance	neutral	COSMOS; NATRUE
Apricot Seed Oil Neutral conventional; cold pressed	PRUNUS ARMENIACA KERNEL OIL	skin conditioning, fragrance	mild nutty, sweet, slight marzipan	COSMOS; NATRUE
Apricot Seed Oil Standard conventional; cold pressed	PRUNUS ARMENIACA KERNEL OIL	skin conditioning, fragrance	nutty, slight marzipan, herbal	COSMOS; NATRUE
Apricot Seed Oil Premium conventional; cold pressed	PRUNUS ARMENIACA KERNEL OIL	skin conditioning, fragrance	intense marzipan, amaretto	COSMOS; NATRUE
Apricot Seed Oil Neutral organic; cold pressed	PRUNUS ARMENIACA KERNEL OIL	skin conditioning, fragrance	mild nutty, sweet, slight marzipan	ORGGANIC; COSMOS; NATRUE
Apricot Seed Oil Standard organic; cold pressed	PRUNUS ARMENIACA KERNEL OIL	skin conditioning, fragrance	nutty, slight marzipan, herbal	ORGGANIC; COSMOS; NATRUE
Apricot Seed Oil Premium organic; cold pressed	PRUNUS ARMENIACA KERNEL OIL	skin conditioning, fragrance	intense marzipan, amaretto	ORGGANIC; COSMOS; NATRUE
Argan Oil organic	ARGANIA SPINOSA OIL	skin conditioning, hair gloss		ORGANIC
Baobab Oil organic	ADANSONIA DIGITATA SEED OIL	emollient, hair conditioning, skin conditioning		ORGANIC; FAIR TRADE
Cherry Seed Oil Standard conventional; cold pressed	PRUNUS CERASUS SEED OIL	skin conditioning, fragrance	slight amaretto, cherry fruit	COSMOS; NATRUE
Cherry Seed Oil Premium conventional; cold pressed	PRUNUS CERASUS SEED OIL	skin conditioning, fragrance	amaretto, fruity-sweet cherry	COSMOS; NATRUE
Cherry Seed Oil Standard organic; cold pressed	PRUNUS CERASUS SEED OIL	skin conditioning, fragrance	slight amaretto, cherry fruit	ORGANIC; COSMOS; NATRUE
Cherry Seed Oil Premium organic; cold pressed	PRUNUS CERASUS SEED OIL	skin conditioning, fragrance	amaretto, fruity-sweet cherry	ORGANIC; COSMOS; NATRUE
Hydrogil Opentia	OPUNTIA FICUS-INDICA STEM EXTRACT	skin conditioning		
Joboba Oil golden organic / conventional	SIMMONDSIA CHINENSIS SEED OIL	emollient, hair conditioning, skin conditioning		ORGANIC
Joboba Oil colorless organic / conventional	SIMMONDSIA CHINENSIS SEED OIL	emollient, hair conditioning, skin conditioning		ORGANIC



Natural or Organic Oils

Product	INCI	Description	Label
NAT Deodorized Oat Oil	AVENA SATIVA KERNEL OIL	moisturizing, softening and conditioning for skin and hair, anti-inflammatory, antioxidant, anti-irritant	COSMOS
NAT Deodorized Apple Seed Oil	PYRUS MALUS SEED OIL	skin elasticity, skin regeneration, hair nourishing, easy to style hair, very light feel, no greasiness	COSMOS
NAT Hazelnut T Oil	CORYLUS AVELLANA SEED OIL	masking, skin barrier function, reconstructing sebum, light feel, no greasiness, characteristic smell of praline	COSMOS
NAT Organic Deodorized Baobab Oil	ADANSONIA DIGITA SEED OIL	emollient, hair conditioning, skin conditioning	COSMOS ORGANIC
NAT Organic Deodorized Hemp Seed Oil	CANNABIS SATIVA SEED OIL	THC < 0,2%, perfect for sensitive skin and skin diseases, also for hair care and sensitive scalp	COSMOS ORGANIC
NAT Organic Deodorized Pomegranate Oil	PUNICA GRANATUM SEED OIL	slightly shiny film, penetrates easily, anti-inflammatory	COSMOS ORGANIC
NAT Organic Plum Oil	PRUNUS DOMESTICA SEED OIL	soothing, nourishing, emolliency properties, spreads easily, penetrates quickly, silky feel, characteristic smell of marzipan	COSMOS ORGANIC
NAT Organic Provence Olive Oil	OLEA EUROPAEA FRUIT OIL	nourishing, emollient and softening properties, excellent healing agent, deodorized	COSMOS ORGANIC
NAT Organic Deodorized Walnut Oil	JUGLANS REGIA SEED OIL	nourishing, skin conditioning, anti-inflammatory, emolliency	COSMOS ORGANIC
Seabuckthorn Pulp Oil organic / conventional	HIPPOPHAE RHAMNOIDES FRUIT OIL	skin conditioning, moisturizing, antiaging, anti-inflammatory, antioxidant, rich in palmitinic acid, vitamin A, E, K	ORGANIC

Various other natural oils, like broccoli seed oil, cocos oil, pumpkin seed oil, camellia seed oil, cranberry seed oil, linseed oil, evening prime rose oil, wheat germ oil, strawberry seed oil, cucumber seed oil, elderberry seed oil, water melon seed oil, vanilla oil, coffee bean oil etc.

Please contact your sales representative for a complete overview and technical advise.

Natural Vegetable Butters			
Product	INCI	Functions	Label
Jojoba Butter colorless	SIMMONDSIA CHINENSIS SEED OIL, BEESWAX, HYDROGENATED VEGETABLE OIL	quickly absorbed by skin, nourishing, soft and silky feeling	100% NATURAL
Jojoba Butter golden (organic / conventional)			
NAT Gascony Plum Butter	PRUNUS DOMESTICA SEED OIL, HYDROGENATED PRUNUS DOMESTICA SEED OIL	spreads easily, nourishing, moisturizing, texturizer, slight shiny effect, characteristic smell of marzipan, MP 63-69°C	COSMOS
NAT Hazelnut T. Butter	CORYLUS AVELLANA SEED OIL (AND) HYDROGENATED HAZELNUT OIL	nourishing and repairing for hair and skin, leaves a soft and non-shiny feel, praline-like odor, MP 62- 72°C	COSMOS
NAT Oat Butter	AVENA SATIVA KERNEL OIL, HYDROGENATED AVENA SATIVA KERNEL OIL	firm to the touch, but malleable, provides body, moisturizing, anti-inflammatory, anti-itching, MP 50-65°C	COSMOS
NAT Pistachio Butter	PISTACIA VERA SEED OIL, HYDROGENATED PISTACIA VERA SEED OIL	spreads easily, penetrates quickly, softening, nourishing, MP 62-68°C	COSMOS
PREMIUM Organic Almond Butter	PRUNUS AMYGDALUS DULCIS OIL, HYDROGENATED SWEET ALMOND OIL	spreads easily, penetrates quickly, velvety soft finish, moisturizing, emulsion stabilizer, MP 65- 71°C	COSMOS ORGANIC
PREMIUM Organic Apricot Butter	PRUNUS ARMENIACA KERNEL OIL, HYDROGENATED APRICOT KERNEL OIL	nourishing, skin glow, spreads easily, softens skin, emulsion stabilizer, MP 63-69°C	COSMOS ORGANIC
PREMIUM Organic Argan Butter	ARGANIA SPINOSA KERNEL OIL, HYDROGENATED ARGANIA SPINOSA KERNEL OIL	firm feel, spreads easily, penetrates quickly, dry and matte finish, emulsion stabilizer, MP 63- 69°C	COSMOS ORGANIC
PREMIUM Organic Avocado Butter	PERSEA GRATISSIMA OIL, HYDROGENATED AVOCADO OIL	soft and rich feel, comfortable and dry finish, MP 58-64°C	COSMOS ORGANIC
PREMIUM Organic Coconut Butter	COCOS NUCIFERA OIL, HYDROGENATED COCONUT OIL	very smooth, nourishing, protecting, slight shine, MP 26-35°C	COSMOS ORGANIC
PREMIUM Organic Hemp Butter	CANNABIS SATIVA SEED OIL, HYDROGENATED CANNABIS SATIVA SEED OIL	THC < 0,2%, very smooth and melting feel, good penetration, velvet touch, MP 61-72°C	COSMOS ORGANIC
PREMIUM Organic Olive Butter	OLEA EUROPAEA FRUIT OIL, HYDROGENATED OLIVE DRUIT OIL	nourishing, softening, emollient, firm consistency, spreads easily, dry and matte finish, emulsion stabilizer, MP 55-65°C	COSMOS ORGANIC

Natural Compositions for Skin Care

Product	Description	conc. %
Olealight™ L	Olealight™ L is a 100% vegetable origin product, which has similar properties to Lanoline. The pleasant feel on the skin and the waterproof properties are just some of the positive aspects of Olealight™ L. Additionally moisturization (TEWL), skin protection, film forming properties, spreading and lightening properties, pigment dispersion. INCI: BUTYROSPERMUM PARKII (SHEA BUTTER), OLEA EUROPEA (OLIVE) FRUIT OIL, GLYCERYL OLIVATE, POLYGLYCERYL-4 OLEATE, LINOLEIC ACID	1-50
Oleawhite	Oleawhite is a 100% plant-derived product, with similar properties to Petrolatum. It stabilizes emulsions at a broad range of temperatures, without changing consistency of emulsion. The pleasant feel on the skin and the waterproof properties are just some of the positive aspects of Oleawhite. In addition, when used in formulations are these: film forming properties, spreading properties, pigment dispersion. INCI: OLUS OIL	1-50



Natural Vegetable Waxes

Product	INCI	Function	Label
NAT Organic Apricot Wax	HYDROGENATED APRICOT WAX	skin softening, provides body in formulations, MP 67-73°C	COSMOS ORGANIC
NAT Organic Argan Wax	HYDROGENATED ARGAN WAX	skin softening, provides body in formulations, MP 60-70°C	
NAT Rice Bran Wax	ORYZA SATIVA BRAN CERA	oil gelling properties, substitute for bees wax, carnauba wax or candelilla wax, MP 75-82°C	COSMOS
NAT Organic Carnauba Wax	COPERNICIA CERIFERA CERA	skin conditioning, film forming, high temperature stability, MP 80-86°C	COSMOS ORGANIC
NAT Sumac Wax	RHUS VERNICIFLUA CERA	forms microcrystalline network, thus stabilizing emulsions, provides body, feel of free fatty acids	COSMOS
NAT Sunflower Wax	HELIANTHUS ANNUUS SEED CERA	oil gelling properties, forms strong network, improving temperature stability of the end product, replacement of Carnauba, Candelilla or mineral waxes, MP 74-80°C	COSMOS

Other Products / Natural

Aloe Vera 200:1 Powder (conventional/organic)	ALOE BARBADENSIS LEAF JUICE POWDER	skin conditioning, moisturizing, anti-inflammatory	ORGANIC
Gelee Royal (native und lyophilisated qualities)	ROYAL JELLY	anti-inflammatory, moisturizing	
Pantrofina® J-Gravity	LAVANDULA HYBRIDA OIL, CAMELLIA SINENSIS EXTRACT	improving skin cohesion, counteracting sagging, and reducing gravity-induced wrinkles; for Cosmetic Aromatherapy too	COSMOS NATURAL; NATRUE
Propolis (solid, powder, blends)	different INCI names	anti-seborrhoeic, emollient, moisturizing, skin conditioning, smoothing	
Seabuckthorn water	HIPPOPHAE RHAMNOIDES FRUIT WATER	solvent	ORGANIC
Sharoderm DN MB	DIGLYCERIN	Powerful humectant delivering long-lasting moisturization and prevents dehydration, especially for sensitive or dry skin	COSMOS

Other Products

Product	INCI	Function
Citric Acid	CITRIC ACID	buffering, chelating, masking, pH regulation
Bibutyl Adipate	DIBUTYL ADIPATE	skin conditioning-emollient, film forming, plasticizer, skin conditioning, solvent
D,L-Malic Acid	MALIC ACID	fruit acid, skin conditioning, humectant, pH regulation
Sikelide™	AQUA, POLYGLYCERYL-4 OLEATE, GLYCERYL OLIVATE, HYDROGENATED RAPESEED ALCOHOL, POLOXAMER 338, PPG51/SMDI COPOLYMER	SPF-Booster
Sodium Cocoyl Isethionate	SODIUM COCOYL ISETHIONATE	cleansing, hair conditioning, surfactant-cleansing
Sodium Tripolyphosphate	PENTASODIUM TRIPHOSPHATE	buffering, chelating, oral care
Tetrapotassium Pyrophosphate	TETRAPOTASSIUM PYROPHOSPHATE	buffering, chelating, oral care
Tripotassium Citrate	POTASSIUM CITRATE	buffering, chelating

Oils – water soluble RSP0

Product	INCI	
RESPLANTA® ALMOND MB	ALMOND OIL GLYCERETH-8 ESTERS	
RESPLANTA® ARGAN MB	ARGAN OIL GLYCERETH-8 ESTERS	
RESPLANTA® AVOCADO MB	AVOCADO OIL GLYCERETH-8 ESTERS	
RESPLANTA® BABASSU MB	BABASSU OIL GLYCERETH-8 ESTERS	Resplanta® Babassu MB improves the efficacy of make-up remover. Tested at 5%
RESPLANTA® CAMELINA MB	CAMELINA SATIVA SEED OIL GLYCERETH-8 ESTERS	
RESPLANTA® COCONUT MB	COCONUT OIL GLYCERETH-8 ESTERS	

Oils – water soluble RSPO

Product	INCI	
RESPLANTA® COTTON MB	COTTON SEED OIL GLYCERETH-8 ESTERS	
RESPLANTA® GRAPE MB	GRAPE SEED OIL GLYCERETH-8 ESTERS	
RESPLANTA® HEMP IN-FUSION MB	CANNABIS SATIVA SEED OIL GLYCERETH-8 ESTERS	Resplanta® Hemp Infusion improves the integrity of the skin barrier of the scalp. Tested at 10%.
RESPLANTA® JOJOBA MB	JOJOBA OIL GLYCERETH-8 ESTERS	
RESPLANTA® LINSEED MB	LINSEED OIL GLYCERETH-8 ESTERS	
RESPLANTA® MACADAMIA MB	MACADAMIA OIL GLYCERETH-8 ESTERS	
RESPLANTA® OLIVE MB	OLIVE OIL GLYCERETH-8 ESTERS	
RESPLANTA® PEACH MB	PEACH KERNEL OIL GLYCERETH-8 ESTERS	
RESPLANTA® RICE MB	RICE OIL GLYCERETH-8 ESTERS	
RESPLANTA® SAFFLOWER MB	SAFFLOWER SEED OIL GLYCERETH-8 ESTERS	
RESPLANTA® SESAME MB	SESAME OIL GLYCERETH-8 ESTERS	
RESPLANTA® SHEA MB	SHEA BUTTER GLYCERETH-8 ESTERS	
RESPLANTA® WHEAT MB	WHEAT GERM OIL GLYCERETH-8 ESTERS	
Product	INCI	Label
RESPLANTA® PHYTO ALMOND	ALMOND OIL POLYGLYCERYL-4 ESTERS	COSMOS
RESPLANTA® PHYTO ARGAN	ARGAN OIL POLYGLYCERYL-4 ESTERS	COSMOS
RESPLANTA® PHYTO BABASSU	BABASSU OIL POLYGLYCERYL-4 ESTERS	COSMOS
RESPLANTA® PHYTO BROCCOLI	BRASSICA OLERACEA ITALICA SEED OIL POLYGLYCERYL-4 ESTERS	COSMOS
RESPLANTA® PHYTO HEMP IN-FUSION	CANNABIS SATIVA SEED OIL GLYCERETH-8 ESTERS	COSMOS
RESPLANTA® PHYTO LINSEED	LINSEED OIL POLYGLYCERYL-4ESTERS	COSMOS
RESPLANTA® PHYTO MACADAMIA	MACADAMIA SEED OIL POLYGLYCERYL-4 ESTERS	COSMOS
RESPLANTA® PHYTO OLIVE MB	OLIVE OIL POLYGLYCERYL-4 ESTERS	COSMOS; NATRUE
RESPLANTA® PHYTO POMEGRANATE	PUNICA GRANATUM SEED OIL POLYGLYCERYL-4 ESTERS	COSMOS
RESPLANTA® PHYTO PUMPKIN	PUMPKIN SEED OIL POLYGLYCERYL-4 ESTERS	COSMOS
RESPLANTA® PHYTO SAFFLOWER	SAFFLOWER SEED OIL POLYGLYCERYL-4 ESTERS	COSMOS
RESPLANTA® PHYTO SHEA	SHEA BUTTER POLYGLYCERYL-4 ESTERS	COSMOS

Oils – water soluble RSPO

Product	INCI	Label
RESPLANTA® PHYTO SUNFLOWER	SUNFLOWER SEED OIL POLYGLYCERYL-4 ESTERS	COSMOS
RESPLANTA® PHYTO-6 ALMOND	SWEET ALMOND OIL POLYGLYCERYL-6 ESTERS	China listed
RESPLANTA® PHYTO-6 ARGAN MB	ARGAN OIL POLYGLYCERYL-6 ESTERS	China listed
RESPLANTA® PHYTO-6 OLIVE	OLIVE OIL POLYGLYCERYL-6 ESTERS	China listed



Peeling Agents / Scrubs

Product	INCI	Granulation Sizes	Application	Label
Agenapeel 500	ORYZA SATIVA (RICE) POWDER	D50: approx. 400 µm	water-free formulations	
Kern Peel Apricot	PRUNUS ARMENIACA SHELL POWDER	< 100 µm	facial scrubs, cleansing gels	COSMOS; NATRUE
Kern Peel Apricot	PRUNUS ARMENIACA SHELL POWDER	100-500 µm	mild body scrubs	COSMOS; NATRUE
Kern Peel Apricot	PRUNUS ARMENIACA SHELL POWDER	500-800 µm	shower gels, body exfoliants, masks	COSMOS; NATRUE
Kern Peel Apricot	PRUNUS ARMENIACA SHELL POWDER	800-1200 µm	liquid soaps, massage peels, rinse-off products	COSMOS; NATRUE
Kern Peel Apricot	PRUNUS ARMENIACA SHELL POWDER	1200-1600 µm	solid soaps, foot scrubs, exfoliating bars	COSMOS; NATRUE
Kern Peel Apricot	PRUNUS ARMENIACA SHELL POWDER	> 1600 µm	decorative soaps, visual exfoliants	COSMOS; NATRUE
Kern Peel Cherry	PRUNUS CERASUS SHELL POWDER	< 100 µm	facial scrubs, cleansing gels	COSMOS; NATRUE
Kern Peel Cherry	PRUNUS CERASUS SHELL POWDER	100-500 µm	mild body scrubs	COSMOS; NATRUE
Kern Peel Cherry	PRUNUS CERASUS SHELL POWDER	500-800 µm	shower gels, body exfoliants, masks	COSMOS; NATRUE
Kern Peel Cherry	PRUNUS CERASUS SHELL POWDER	800-1200 µm	liquid soaps, massage peels, rinse-off products	COSMOS; NATRUE
Kern Peel Cherry	PRUNUS CERASUS SHELL POWDER	1200-1600 µm	solid soaps, foot scrubs, exfoliating bars	COSMOS; NATRUE
Kern Peel Cherry	PRUNUS CERASUS SHELL POWDER	> 1600 µm	decorative soaps, visual exfoliants	COSMOS; NATRUE

Preservatives for Cosmetics

Aquavita® range:

The first and only vitamin-based multifunctional preservation system resulting from the search for new synergies. A globally approved, broad spectrum preservation system with proven skin benefits.

Applications: Skin-, Body-, Hair -, Face-, Oral-, Baby- & Face care and also for Color cosmetics;
Form: powder; Use level 3-5%; pH range 4-8

Product	Actives
SHARON AQUAVITA® 90	NIACINAMIDE, GLYCERYL CAPRYLATE, DECYLENE GLYCOL
SHARON AQUAVITA® 95	NIACINAMIDE, POLYLYSINE

Sharon™ Biomix Line:

An alternative preservative solution for green and natural formulations, ideal for Leave-on and Rinse-off products. Use level. 0,6-2 %; pH-range: 3-9

Product	INCI	Label
Sharon™ Biomix ECO-N	BENZYL ALCOHOL, GLYCERIN, CITRUS AURANTIUM AMARA FRUIT EXTRACT, CITRUS RETICULATA FRUIT EXTRACT, LACTIC ACID, ASCORBIC ACID, WATER, CITRIC ACID, TOCOPHEROL	COSMOS
Sharon™ Biomix FREE CG-N	GLYCERIN, CAPRYLYL GLYCOL, CITRUS AURANTIUM AMARA FRUIT EXTRACT, CITRUS RETICULATA FRUIT EXTRACT, LACTIC ACID, ASCORBIC ACID, WATER, CITRIC ACID	
Sharon™ Biomix Pure-N	BENZYL ALCOHOL, GLYCERIN, CITRUS AURANTIUM AMARA FRUIT EXTRACT, CITRUS RETICULATA FRUIT EXTRACT, LACTIC ACID, ASCORBIC ACID, WATER, CITRIC ACID, TOCOPHEROL	COSMOS

Sharon™ Citrus:

The recommended level of use is 1–2%, as a single ingredient.

When combined in a Biomix or with the client's chosen preservative, the level of use is ~1%.

Compliant naturality COSMOS / ISO 16128.

Odorless, orange color and more viscous appearance.

Product	INCI	Label
Sharon™ Citro	GLYCERIN, CITRUS AURANTIUM AMARA FRUIT EXTRACT, CITRUS RETICULATA FRUIT EXTRACT, LACTIC ACID, WATER, ASCORBIC ACID, CITRIC ACID	COSMOS



Preservatives for Cosmetics

SharoSense™ Plus range:
modern preservatives based on Maltol, advanced efficacy and solubility, use approx. 0,5 %

Product	Actives
SharoSense™ Plus 181	MALTOL, POLYQUATERNIUM-80
SharoSense™ Plus 181-N	NATURAL MALTOL, POLYQUATERNIUM-80 (PLANT BASED)
SharoSense™ Plus 183	MALTOL, POLYQUATERNIUM-80, DIDECYLDIMONIUM CHLORIDE
SharoSense™ Plus 184	MALTOL, DIDECYLDIMONIUM CHLORIDE



SharoWIPES™ Range:
Innovation for Wet Wipes – anti-biofilm mechanism, broad spectrum, low level

Product	INCI		Label
SharoWIPES™ 630	MALTOL, ZINC ACETATE, SODIUM BENZOATE	highest efficacy	
SharoWIPES™ 631	MALTOL, SORBIC ACID, SODIUM BENZOATE	inspired by nature	
SharoWIPES™ 632	ZINC ACETATE, SODIUM BENZOATE	value blend, no anti-biofilm	
SharoWIPES™ 650	SODIUM BENZOATE, LEVULINIC ACID, ZINC LACTATE	This inspired-by-nature system offers dual protection for formula and non-woven with unique with anti-biofilm mechanism.	COSMOS; NATRUE
SharoWIPES™ 651	SODIUM BENZOATE, SORBIC ACID, LEVULINIC ACID	This inspired-by-nature system offers dual protection for formula and non-woven with unique with anti-biofilm mechanism.	COSMOS; NATRUE
SharoWIPES™ 652	SODIUM BENZOATE, ZINC LACTATE	This system offers broad spectrum protection with minimalistic and clean INCI approach.	COSMOS; NATRUE

Preservatives for Cosmetics

Sharomix AMPLIFY™ Range: Innovative use of cationic surfactants that allow low concentration, delivered strong broad spectrum protection, use approx. 0,5%

Product	Actives
Sharomix™ AM 20	Phenoxyethanol, Ethylhexylglycerin, Didecyldimonium Chloride
Sharomix™ AM 24	Methylpropanediol, Caprylyl Glycol, Polyquaternium-80, Didecyldimonium Chloride
Sharomix™ AM 25	Phenoxyethanol, Chlorphenesin, Caprylyl Glycol, Didecyldimonium Chloride
Sharomix™ AM 28	Methylpropanediol, Caprylyl Glycol, Didecyldimonium Chloride
Sharomix™ AM 720	Sodium Benzoate, Potassium Sorbate, Didecyldimonium Chloride, Water

Advanced Line

Product	Actives
Sharomix™ CPA	Caprylyl Glycol, Phenethyl Alcohol
Sharomix™ CPP	Caprylyl Glycol, Phenylpropanol
Sharomix™ CAP	Caprylyl Glycol, Phenoxyethanol
Sharomix™ CB	Caprylyl Glycol, Benzyl Alcohol
Sharomix™ HB	1,2-Hexanediol, Benzyl Alcohol
Sharomix™ HP	1,2-Hexanediol, Phenylpropanol
Sharomix™ PTG	Phenoxyethanol, Triethylene Glycol
Sharomix™ EG10/EG14	Ethylhexylglycerin, Phenoxyethanol
Sharomix™ BEG/BEG14	Ethylhexylglycerin, Natural Vitamin E, Benzyl Alcohol
Sharomix™ 699	Sodium Benzoate, Zinc Acetate
SharoSENSE™ 250	Thymol, Linalool, Phenoxyethanol
SharoSENSE™ 695	Sodium Benzoate, Sorbic Acid, Levulinic Acid – COSMOS; NATRUE
SharoSENSE™ 785 Plus	Sodium Benzoate, Sorbic Acid, Maltol – COSMOS

Organic Acid Blends

Various Blends containing Benzoic Acid, Dehydroacetic Acid, Sorbic Acid, Benzyl Alcohol, Phenoxyethanol, Caprylyl Glycol, Potassium Sorbate, Sodium Benzoate, Sodium Lauroyl Lactate etc.

Please contact your sales representative for a complete overview and technical advise.

Classic Preservation

Various Blends containing Parabens, Parabens salts, Phenoxyethanol, Propylene Glycol, Bronopol, DMDM Hydantoin, MIT, CMIT/MIT, Diazolidinyl Urea etc.

Please contact your sales representative for a complete overview and technical advise.



Preservatives for Cosmetics

Single Preservatives

Product	Active
Bronopol	Bronopol
DMDMH	DMDM Hydantoin, water
Ethylparaben	Ethylparaben
Methylparaben	Methylparaben
Phenoxyethanol	Phenoxyethanol
PHMB	Polyaminopropyl Biguanide
Potassium Sorbate Granulate	Potassium Sorbate
Propylparaben	Propylparaben
Sharon BAZ	Benzyl Alcohol
Sharon BAZ Natural	Natural Benzyl Alcohol
Sharon Caprylyl Glycol	Caprylyl Glycol
Sharon Chlorphenesin	Chlorphenesin
Sharon E50	Ethylhexylglycerin
Sharomix HMG	Sodium Hydroxymethylglycinate, Water
Sharomix MT	Methylisothiazolinone, Water
Sharon PA	Phenethyl Alcohol
Sharon PA Natural	Natural Phenethyl Alcohol
Sharon PPL	3-Phenyl-1-Propanol
Sodium Benzoate Granulate	Sodium Benzoate
Sodium Methylparaben	Sodium Methylparaben
Sodium Propylparaben	Sodium Propylparaben
Zinc Sulphate Heptahydrate	Zinc Sulphate
Zinc Chloride Anhydrous	Zinc Chloride





Silicones for Personal Care

Product	INCI	Function skin care	Function hair care
Sil-O-San 8611C	PEG-12 DIMETHICONE	skin conditioning, smoothing, good wetting behaviour, emulsification and gloss	conditioning, very good wet and dry grip, smoothing, reduced dry time, excellent for foams
Sil-O-San 8612C	PEG/PPG-20/20 DIMETHICONE	emulsifying and emulsion stabilisation, very good	excellent smoothing, reduced dry time, good gloss, good wet and dry grip
Sil-O-San 8621C	BIS-PEG/PPG-15/5 DIMETHICONE	very good emulsifying and emulsion stabilising, excellent care effect and skin roughness improvement	very good wet and dry grip, color protection
Sil-O-San 8622C	BIS-PEG-12 DIMETHICONE	excellent spreading and wetting behaviour, excellent in reducing skin roughness	conditioning, excellent gloss and smoothing
Sil-O-San 8631C	CETYL DIMETHICONE	excellent spreading and wetting behaviour, excellent gloss and water repellancy	excellent hair color and heat protection, excellent gloss gloss
Sil-O-San 8632C	C20-C24 ALKYL DIMETHICONE	very good emulsifying and emulsion stabilising, excellent water repellancy	excellent hair color and heat protection, very good conditioning and gloss
Sil-O-San 8633C	C24-C28 ALKYL DIMETHICONE	very good wetting behaviour and color brilliance, excellent water repellancy	excellent hair color and heat protection
Sil-O-San 8651C	AMODIMETHICONE, TRIDECETH-12, CETRIMONIUM CHLORIDE		excellent hair conditioning, excellent wet and dry grip, antistatic

Smart Solutions

Concentrated formulations for emulsions, sunscreen or detergents that can be used straight or diluted as required: these are all smart solutions.

Resconcept®: Concentrated moisturizing fluid emulsions. Their hyper-fluid structure makes them dynamic systems able to transform in different textures.

Product	INCI	Characteristics
RESCONCEPT® A2	WATER, ETHYLHEXYL PALMITATE, CAPRYLIC/CAPRIC TRIGLYCERIDE, GLYCERIN, CETETH-2, CETEARETH-25, GLYCERYL STEARATE, CETYL PALMITATE, CETEARYL ALCOHOL, PHENOXYETHANOL, PARAFFINUM LIQUIDUM, LAURYL ALCOHOL, CYCLOPENTASILOXANE, MYRISTYL ALCOHOL, BENZOIC ACID, DEHYDROACETIC ACID, ETHYLHEXYLGLYCERIN.	Versatile texture Aspect: Liquid white emulsion
RESCONCEPT® CARE PLUS	WATER, C12-15 ALKYL BENZOATE, TRIISOSTEARIN, DIGLYCERIN, CETETH-2, CETEARETH-25, DIMETHICONE, GLYCERYL STEARATE, CETYL PALMITATE, CETEARYL ALCOHOL, PHENOXYETHANOL, LAURYL ALCOHOL, MYRISTYL ALCOHOL, GLYCERYL CAPRYLATE, CAPRYLYL GLYCOL	Rich skin-feel; Luxury after feel Aspect: Liquid white emulsion
RESCONCEPT® PGF7 S10 RSPO – MB	WATER, C12-15 ALKYL BENZOATE, TRIISOSTEARIN, DIGLYCERIN, GLYCERYL STEARATE, CAPRYLIC/CAPRIC TRIGLYCERIDE, CETYL PALMITATE, POTASSIUM CETYL PHOSPHATE, CAPRYLYL GLYCOL, ETHYLHEXYLGLYCERIN	Rich skin-feel; Luxury after feel; Suitable for baby caring; No PEG-derivatives Aspect: Liquid white emulsion
RESCONCEPT® HYDRASENSE	AQUA (WATER), ETHYLHEXYL PALMITATE, GLYCERIN, DECYL OLEATE, DIGLYCERIN, CETETH-2, CETEARETH-25, OLIVE OIL GLYCERETH-8 ESTERS, GLYCERYL STEARATE, CAPRYLYL GLYCOL, ETHYLHEXYLGLYCERIN, POTASSIUM CETYL PHOSPHATE	Elegant texture; Light skin feel; Suitable for baby caring Aspect: Liquid white emulsion
RESCONCEPT® RSPO PLUS SG	AQUA (WATER), C10-18 TRIGLYCERIDES, C12-15 ALKYL BENZOATE, OCTYLDODECANOL, ISONONYL ISONONANOATE, LAURYL GLYCOL ETHER, PROPYLENE GLYCOL, POTASSIUM CETYL PHOSPHATE, GLYCERYL STEARATE CITRATE, PHENOXYETHANOL, SODIUM BENZOATE, POTASSIUM SORBATE, CITRIC ACID	Rich skin-feel; Professional skincare; No PEG-derivatives Aspect: Liquid white emulsion
RESCONCEPT® COCOSTORM	WATER, COCOS NUCIFERA (COCONUT) OIL, ETHYLHEXYL PALMITATE, OCTYLDODECANOL, CETETH-2, CETEARETH-25, PHENOXYETHANOL, SODIUM BENZOATE, POTASSIUM SORBATE, CITRIC ACID	Nourishing texture; Velvety After-feel; Ideal for after sun application Aspect: Liquid white emulsion

Smart Solutions

Concentrated formulations for emulsions, sunscreen or detergents that can be used straight or diluted as required: these are all smart solutions.

Resconcept® Sun: Concentrated fluid emulsion for sun products.

Product	INCI	Filters
RESCONCEPT® Sun SPF 30 Eco Reef	AQUA, C12-15 ALKYL BENZOATE, BUTYLOCTYL SALICYLATE, DIISOPROPYL ADIPATE, ETHYLHEXYL SALICYLATE, DIETHYLAMINO HYDROXYBENZOYL HEXYL BENZOATE, BIS-ETHYLHEXYLOXYPHENOL METHOXYPHENYL TRIAZINE, PHENYLBENZIMIDAZOLE SULFONIC ACID, ETHYLHEXYL TRIAZONE, POLYGLYCERYL-6 STEARATE, POTASSIUM CETYL PHOSPHATE, METHYL GLUCOSE SESQUISTEARATE, POLYGLYCERYL-6 BEHENATE, DIGLYCERIN, PINUS PINASTER EXTRACT, LACTOBACILLUS FERMENT, GLYCERIN, HYDROXYACETOPHENONE, ETHYLHEXYLGLYCERIN, SODIUM HYDROXIDE, SODIUM GLUCONATE, O-CYMEN-5-OL, TOCOPHERYL ACETATE, VP/EICOSENE COPOLYMER	Ethylhexyl Salicylate, Diethylamino Hydroxybenzoyl Hexyl Benzoate, Bis-Ethylhexyloxyphenol Methoxyphenyl Triazine, Phenylbenzimidazole Sulfonic Acid, Ethylhexyl Triazone
RESCONCEPT® Sun SPF 50 Eco Reef	AQUA, C12-15 ALKYL BENZOATE, BUTYLOCTYL SALICYLATE, DIETHYLAMINO HYDROXYBENZOYL HEXYL BENZOATE, ETHYLHEXYL SALICYLATE, PHENYLBENZIMIDAZOLE SULFONIC ACID, ETHYLHEXYL TRIAZONE, BIS-ETHYLHEXYLOXYPHENOL METHOXYPHENYL TRIAZINE, POLYGLYCERYL-6 STEARATE, POTASSIUM CETYL PHOSPHATE, METHYL GLUCOSE SESQUISTEARATE, POLYGLYCERYL-6 BEHENATE, DIGLYCERIN, PINUS PINASTER EXTRACT, GLYCERIN, LACTOBACILLUS FERMENT, HYDROXYACETOPHENONE, ETHYLHEXYLGLYCERIN, SODIUM HYDROXIDE, SODIUM GLUCONATE, O-CYMEN-5-OL, TOCOPHERYL ACETATE, VP/EICOSENE COPOLYMER	Ethylhexyl Salicylate, Diethylamino Hydroxybenzoyl Hexyl Benzoate, Bis-Ethylhexyloxyphenol Methoxyphenyl Triazine, Phenylbenzimidazole Sulfonic Acid, Ethylhexyl Triazone
RESCONCEPT® Sun SPF 50 Eco Star	AQUA, DIISOPROPYL ADIPATE, DIETHYLAMINO HYDROXYBENZOYL HEXYL BENZOATE, C12-15 ALKYL BENZOATE, BUTYLOCTYL SALICYLATE, ETHYLHEXYL SALICYLATE, PHENYLBENZIMIDAZOLE SULFONIC ACID, BIS-ETHYLHEXYLOXYPHENOL METHOXYPHENYL TRIAZINE, ETHYLHEXYL TRIAZONE, POLYGLYCERYL-6 STEARATE, SODIUM STEAROYL GLUTAMATE, METHYL GLUCOSE SESQUISTEARATE, GLYCERIN, PHENYLPROPANOL, CAPRYLYL GLYCOL, SODIUM HYDROXIDE, TOCOPHERYL ACETATE, ETHYLHEXYLGLYCERIN, HYDROLYZED JOJOBA ESTERS, POLYGLYCERYL-6 BEHENATE, 1,2-HEXANEDIOL, SODIUM GLUCONATE, O-CYMEN-5-OL	Diethylamino Hydroxybenzoyl Hexyl Benzoate, Ethylhexyl Salicylate, Phenylbenzimidazole Sulfonic Acid, Bis-Ethylhexyloxyphenol Methoxyphenyl Triazine, Ethylhexyl Triazone
RESCONCEPT® Sun SPF 30 Traditional Reef New	AQUA, DECYL OLEATE, OCTOCRYLENE, C12-15 ALKYL BENZOATE, ETHYLHEXYL SALICYLATE, VP/EICOSENE COPOLYMER, BUTYL METHOXYDIBENZOYLMETHANE, PHENYLBENZIMIDAZOLE SULFONIC ACID, GLYCERIN, CETETH-2, CETARETH-25, TOCOPHERYL ACETATE, GLYCERYL STEARATE, PHENOXYETHANOL, ETHYLHEXYLGLYCERIN, GLYCERYL CAPRYLATE, DISODIUM EDTA, SODIUM HYDROXIDE	Octocrylene 8% Butyl Methoxydibenzoylmethane, Ethylhexyl Salicylate Phenylbenzimidazole Sulfonic Acid

Smart Solutions

Concentrated formulations for emulsions, sunscreen or detergents that can be used straight or diluted as required: these are all smart solutions.

Resconcept® Sun: Concentrated fluid emulsion for sun products.

Product	INCI	Filters
RESCONCEPT® Sun SPF 50+ Traditional Reef New	AQUA, C12-15 ALKYL BENZOATE, OCTOCRYLENE, ETHYLHEXYL SALICYLATE, BUTYL METHOXYDIBENZOYLMETHANE, DECYL OLEATE, PHENYLBENZIMIDAZOLE SULFONIC ACID, VP/EICOSENE COPOLYMER, GLYCERIN, CETETH-2, CETEARETH-25, LACTOBACILLUS FERMENT, PHENOXYETHANOL, BIS-ETHYLHEXYLOXYPHENOL METHOXYPHENYL TRIAZINE, ETHYLHEXYL TRIAZONE, GLYCERYL STEARATE, TOCOPHERYL ACETATE, LAURYL ALCOHOL, ETHYLHEXYLGLYCERIN, GLYCERYL CAPRYLATE, MYRISTYL ALCOHOL, DISODIUM EDTA, SODIUM HYDROXIDE, ALOE BARBADENSIS LEAF JUICE POWDER	Octocrylene 9% Butyl Methoxydibenzoylmethane, Ethylhexyl Salicylate Phenylbenzimidazole Sulfonic Acid Bis-Ethylhexyloxyphenol Methoxyphenyl Triazine Ethylhexyl Triazone
RESCONCEPT® AFTERSUN	AQUA, ETHYLHEXYL STEARATE, DICAPRYLYL ETHER, CETETH-2, HYDROGENATED POLYDECENE, DIGLYCERIN, CETEARETH-25, 1,2-HEXANEDIOL, BUTYROSPERMUM PARKII BUTTER, PHENOXYETHANOL, POTASSIUM CETYL PHOSPHATE, GLYCERYL STEARATE, NIACINAMIDE, CETYL ALCOHOL, HYPERICUM PERFORATUM EXTRACT, CALENDULA OFFICINALIS FLOWER EXTRACT, ANTHEMIS NOBILIS FLOWER EXTRACT, CENTAUREA CYANUS FLOWER EXTRACT, TILIA CORDATA FLOWER EXTRACT, CHAMOMILLA RECUTITA FLOWER EXTRACT, OLIVE OIL GLYCERETH-8 ESTERS, BUTYLENE GLYCOL, CAPRYLYL GLYCOL, ETHYLHEXYLGLYCERIN, SODIUM GLUCONATE	Recommended for: Moisturizing Soothing Refreshing After sun formulations

Solubilizers and Solvents

Product	INCI	Function	HLB	Label
Gifran 2 M	LAURETH-2	emulsifying, solubilizing, cleansing	6,5	
Gilasol	POLYGLYCERYL-3 COCOATE, CAPRYLYL/CAPRYL GLUCOSIDE, POLYGLYCERYL-6 LAURATE	Gilasol is a high performing natural solubilizer, based on vegetable derived raw materials.		
Gilsaol 100	CAPRYLYL/CAPRYLGLUCOSIDE, POLYGLYCERYL-4 CAPRATE, POLYGLYCERYL-6 LAURATE	Gilasol 100 is a high performing natural solubilizer, based on vegetable derived raw materials.		
Gilasol PLUS	CAPRYLYL/CAPRYLGLUCOSIDE, POLYGLYCERYL-4 CAPRATE, COCO-BETAINE	Gilasol PLUS is a high performing natural solubilizer, based on vegetable derived raw materials.		
Glycerin 86,5% and 99,5% Ph.Eur.	GLYCERIN	solvent		
Organic Glycerin	GLYCERIN	solvent		COSMOS

Stabilizers, Thickeners and Binders

Product	INCI	Function	HLB
Gifran 3 M	LAURETH-3	surfactant thickener, emulsifying, solubilizing	8
Gifran 9 M	LAURETH-9	emulsifying, thickener for emulsions	13,3
Product	INCI	Function	conc. %
Dextrin Palmitate OG-DP11	DEXTRIN PALMITATE	surfactant-emulsifying, gelling of oil, pigment dispersion, prevents pigment aggregation, Increase of viscosity of oil, stabilization of emulsion	
INAGEL green	GLUCOMANNAN, CAPRYLIC/CAPRIC TRIGLYCERIDE, POLYGLYCERYL-4 LAURATE, XANTHAN GUM	natural texturizing agent multipurpose: gelling, thickening, suspending and stabilizing premix Suitable for cold or hot process Can be introduced at the beginning or after emulsification (max. stirring 2000 rpm) COSMOS approved	0,5-2,0
Kopullan CG	PULLULAN	moisturizer, film former, binding agent, texture enhancer; Viscosity \geq 1-2 cps (1%, 30°CI); Personal & Hair Care	2-2,5
Xanthan Gum 80/200 mesh	XANTHAN GUM	binding, emulsion stabilising, gel forming, skin conditioning, viscosity controlling	
Xanthan Gum XG-HT80	XANTHAN GUM	Viscosity \geq 1400 cP (1%, KCl); 80 mesh; \leq 1000 CFU/g Transparent product (\geq 90). Personal Care, Oral Care, Rinse-off	0,05-2
Xanthan Gum XG-HT80-LD	XANTHAN GUM	Viscosity \geq 1400 cP (1%, KCl); 80 mesh; \leq 1000 CFU/g Transparent product (\geq 90). Additionally with low dust effects. Personal Care, Oral Care, Rinse-off	0,05-2
Xanthan Gum XG-HTP80	XANTHAN GUM	Viscosity \geq 1200 cP (1%, KCl); 80 mesh; \leq 2000 CFU/g XG-HTP80 is a high transparent product (\geq 95%). Personal Care, Oral Care, Rinse-off	0,05-2
Xanthan XG-PC	XANTHAN GUM	Viscosity 1200-1600 cP (1%, KCl); 80 mesh; \leq 500 CFU/g Low transparency. Low cellulase content. Oral Care	0,1-4
Xanthan Gum XG-Quick-T	XANTHAN GUM	Viscosity \geq 1400 cP (1%, KCl); 20 mesh; \leq 2000 CFU/g Personal Care, Oral Care, Rinse-off The biggest highlight of this product is the instant solution and transparency (\geq 90%). In the case of mixing at 800 speed, QUICK-T is basically dissolved in about 5 minutes, but the other xanthan gum may take about 40 min., and easy to have clumping. Personal Care, Oral Care, Rinse-off	0,05-0,2
Xanthan XG-T	XANTHAN GUM	Viscosity 1200-1600 cP (1%, KCl); 80 mesh; \leq 500 CFU/g Transparent product (\geq 90). Personal Care, Oral Care, Rinse-off	0,05-2
Xanthan XG-TP	XANTHAN GUM	Viscosity 1200-1600 cP (1%, KCl); 80 mesh; \leq 500 CFU/g Transparent product (\geq 85%). Low cellulase content. Oral Care	0,1-2

Starches for Cosmetic Applications

Product	INCI	Category	Origin	Label
Corn P04 PH "B"	DISTARCH PHOSPHATE	Boiling Resistant Starch (Cook stable)	maize	COSMOS; NATRUE
Rice P04 Natural	DISTARCH PHOSPHATE		rice	COSMOS; NATRUE
Rice NS	DIMETHYLIMIDAZOLIDONE RICE STARCH		rice	
Agenaflo 9050	CORN STARCH MODIFIED	Lipophilic Starches (skin feeling)	waxy maize	
Agenaflo OS 9051	ALUMINIUM STARCH OCTENYLSUCCINATE		maize	
Agenaflo TS	TAPIOCA STARCH (and) POLYMETHYLSILSESQUIOXANE		tapioca	
Tapioca STER	TAPIOCA STARCH	Native Starches (skin feeling + thickening)	tapioca	
Maisita 21.001	ZEA MAYS (CORN) STARCH		maize	
Maisita 9040	ZEA MAYS (CORN) STARCH		maize	COSMOS; NATRUE
Reisita Natural	ORIZA SATIVA STARCH		rice	COSMOS; NATRUE
Tapioca Natural	TAPIOCA STARCH		tapioca	COSMOS; NATRUE
Stärkina Natural 20.014	SOLANUM TUBEROSUM STARCH		potato	COSMOS
Barley Natural	HORDEUM VULGARE SEED FLOUR		barley	COSMOS
Weizita 22.003	TRITICUM VULGARE STARCH		wheat	
Maisita 9060	ZEA MAYS (CORN) STARCH		maize	COSMOS ORGANIC
Organic Tapioca Natural	TAPIOCA STARCH		tapioca	COSMOS ORGANIC
D.S.A. 7	ORYZA SATIVA (RICE) STARCH (and) CETRIMONIUMCHLORIDE	Dry Shampoo Aerosol Starch	rice	
Colored D.S.A. 7	ORYZA SATIVA (RICE) STARCH (and) CETRIMONIUMCHLORIDE (and) pigment	Dry Shampoo Aerosol Starch, black, brown, red, yellow	rice	
Reisita Black 15%	ORYZA SATIVA STARCH; CI 77499	Dry Shampoo Aerosol Starch	rice	
Reisita Dark Brown	ORYZA SATIVA STARCH; CI 77499; CI 77491; CI 77492	Dry Shampoo Aerosol Starch	rice	

Starches for Cosmetic Applications

Product	INCI	Category	Origin	Label
Agenajel 20.313	HYDROXYPROPYL STARCH PHOSPHATE	Pregelatinized Starches (instant thickening in cold water)	waxy maize	
Agenajel 20.306	DISTARCH PHOSPHATE		waxy maize	COSMOS; NATRUE
Agenajel Clear 20.315	HYDROXYPROPYL STARCH PHOSPHATE		potato	
Quemina 21.257	ZEA MAYS (CORN) STARCH		waxy maize	ORGANIC
Agenajel 20.383	HYDROXYPROPYL STARCH PHOSPHATE	Cook-up Starch (thickening in hot water)	waxy maize	
Agenajel 20.350	DISTARCH PHOSPHATE		waxy maize	COSMOS
Agenamalt 20.233	MALTODEXTRIN	Hydrolyzed starches, USP, Ph. Eur, styling	maize	COSMOS ORGANIC
Agenamalt 20.235	MALTODEXTRIN	Hydrolyzed starches, USP, Ph. Eur, styling	maize	ORGANIC
Maize-Style Organic	HYDROLYZED CORN STARCH	Hydrolyzed starches, styling polymer	maize	COSMOS ORGANIC; NATRUE
Agenamalt 20.222	MALTODEXTRIN	Maize, styling	maize	
Agenanova 30.326	MALTODEXTRIN	Waxy maize, film-forming, styling	maize	COSMOS
Agenabon 20.219	HYDROLYZED CORN STARCH	Hydrolyzed starches, styling polymer	maize	COSMOS
Dextrin 20.901	DEXTRIN	Hydrolyzed starches, styling polymer	potato	COSMOS
Agenapeel 500	ORYZA SATIVA (RICE) POWDER	peeling agent	rice	

Aesthetic Skin feeling Cleanser
 Safe Nature Adsorption
 Stabilisation Spreadability Thickener
 Styling Moisturising Sustainability

©SU Chemicals

Surfactants			
Product	INCI	Aspect	Label
SHAROSURF® AR	SODIUM ARGANAMPHOACETATE	Viscous liquid	COSMOS
SHAROSURF® BA	SODIUM BABASSUAMPHOACETATE	Viscous liquid	COSMOS
SHAROSURF® C35	AQUA, DISODIUM COCOYLGLUTAMATE	Liquid	
SHAROSURF® CB	SODIUM COCOABUTTERAMPHOACETATE	Viscous liquid	COSMOS
SHAROSURF® CN	SODIUM COTTONSEEDAMPHOACETATE	Viscous liquid	COSMOS
SHAROSURF® CT MB	DISODIUM COCO-GLUCOSIDE CITRATE, SODIUM COCO-GLUCOSIDE TARTRATE, AQUA	Liquid	COSMOS; NATRUE
SHAROSURF® KT	SODIUM SHEABUTTERAMPHOACETATE	Viscous liquid	COSMOS
SHAROSURF® OL	SODIUM OLIVAMPHOACETATE	Viscous liquid	COSMOS
SHAROSURF® PG6 COCONUT MB	COCONUT OIL, POLYGLYCERYL-6 ESTERS	Paste	COSMOS
SHAROSURF® RC	SODIUM RICEAMPHOACETATE	Viscous liquid	COSMOS
SHAROSURF® S3	OLIVE OIL PEG-7 ESTERS	Liquid	
SHAROSURF® S4-60	SODIUM PEG-7 OLIVE OIL CARBOXYLATE	Viscous liquid	
SHAROSURF® S80	PEG-200 HYDROGENATED GLYCERYL PALMATE, PEG-7 GLYCERYL COCOATE, AQUA	Viscous liquid	
SHAROSURF® SA	SODIUM SWEETALMONDAMPHOACETATE	Viscous liquid	COSMOS
SHAROSURF® SE	SODIUM SESAMPHOACETATE	Viscous liquid	COSMOS
SHAROSURF® SF	SODIUM SUNFLOWERSEEDAMPHOACETATE	Viscous liquid	COSMOS

Zinc Oxides & Boosters

Latest generation of zinc oxide technology



Optimized morphology

Unique particle morphology that provides industry's best performance

Eclipse[®] Z is the latest generation of zinc oxide technology, providing the best transparency on the market without compromising UV performance.



Best transparency in industry

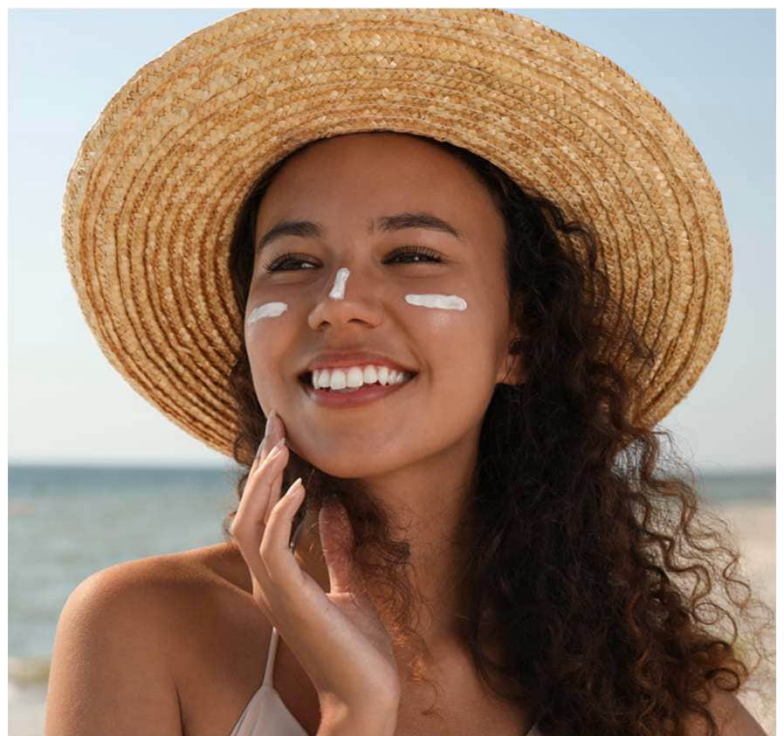
Ideal for all applications and lowest impact in color cosmetics

Eclipse is available in coated and uncoated powder form as well as dispersions.



Lowest impact on formula Aesthetics

Enabling new textures and aesthetics for ZnO based products



Uncoated that works as coated

Easy to use and excellent dispersion, stability and performance



Eclipse® - Zinc Oxide Powders

Product	Function	Label
Eclipse® Z1	Uncoated zinc oxide	COSMOS; NATRUE
Eclipse® Z1-TECS	Zinc oxide coated with triethoxycaprylyl silane	
Eclipse® Z1-ZST	Uncoated zinc oxide and zinc stearate	COSMOS; NATRUE
Eclipse® G1	Granulated Eclipse® Z1	COSMOS; NATRUE
Eclipse® Z2	Uncoated zinc oxide; compliant to French government interpretation of Annex VI of EC1223/2009; meets DGCCRF criteria for acceptance in the French market	NATRUE
Eclipse® ZA	Uncoated zinc oxide; excellent choice to boost UVA performance of formulations; ideal for mineral and hybrid formulations	COSMOS; NATRUE
Eclipse® ZA-TECS	Zinc oxide coated with triethoxycaprylyl silane; as Eclipse® ZA but coated	
ZincoSense	Multifunctional zinc oxide for skin care and color cosmetics	COSMOS; NATRUE

Eclipse® - Zinc Oxide Dispersions (produced with Polyhydroxystearic Acid)

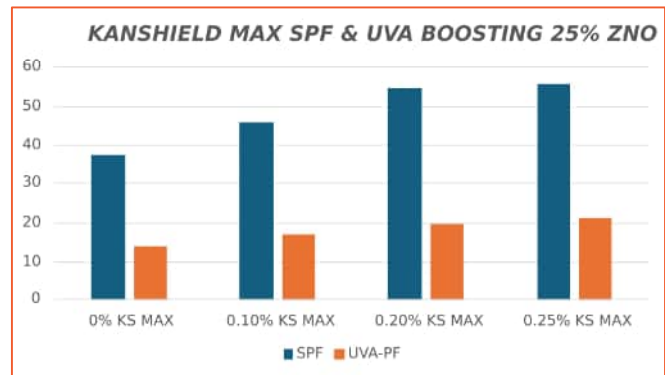
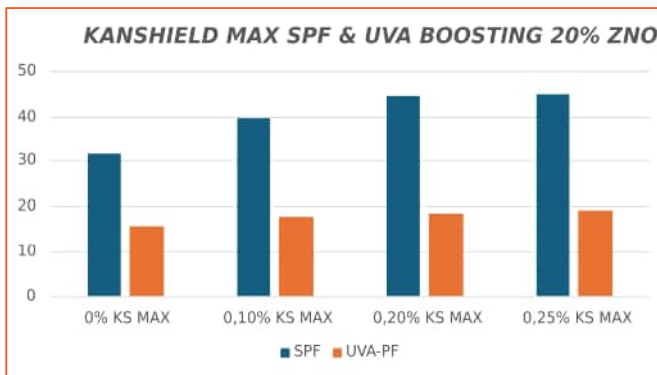
Product	% Filter	UV Filter(s)	Dispersion Base	Label
Eclipse® D1-CC65	65%	Eclipse® Z1	Coco-Caprylate/Caprates	COSMOS; NATRUE
Eclipse® D1-CCT65	65%	Eclipse® Z1	Caprylic/Capric Triglyceride	COSMOS; NATRUE
Eclipse® D2-CC65	65%	Eclipse® Z2	Coco-Caprylate/Caprates	
Eclipse® E1	65%	Eclipse® Z1	Caprylic/Capric Triglyceride and Coco-Caprylate/Caprates	COSMOS

KanShield Max - UV-Booster

An all-natural COSMOS v4 certified SPF and UVA booster made from extracts of Pongamia Seed, Licorice, and Lotus Flower; powerful booster effective in small doses (0,25%).



INCI: PONGAMIA PINNATA SEED EXTRACT, GLYCYRRHIZA GLABRA ROOT EXTRACT, NELUMBO NUCIFERA FLOWER EXTRACT




SPF and UVA boosting

Boosting across the UV spectrum



All-natural ingredients


Combination of 3 natural extracts



Effective at low dosage

A small amount goes a long way

COSMOS STANDARD



Cosmos v4 certified

Cosmos v4 certified for all applications

Ferulishield™ - UV-Booster

UV stabilizer, SPF booster, use level 1,00%

INCI: FERULOYL SOY GLYCERIDES

Zoom to Opportunities (Esters)

INCI	CAS-No.	Function	ISO 16128
C ₁₂₋₁₅ ALKYL BENZOATE	68411-27-8	<ul style="list-style-type: none"> • Light emollient with excellent solubilizing properties for UV filters • Recommended for sun care products and hydrating creams 	-
ETHYLHEXYL PALMITATE	29806-73-3	<ul style="list-style-type: none"> • Emollient and fattening agent with a soft but not greasy touch on the skin • Recommended for creams, lotions and oils 	0,65
ETHYLHEXYL STEARATE	91031-48-0	<ul style="list-style-type: none"> • Universal emollient with good spreadability and light texture • Suitable for skin care and make-up products 	0,66
ISOPROPYL MYRISTATE	110-27-0	<ul style="list-style-type: none"> • Light emollient with dry touch and high absorbability • Good solubilizing properties towards lipophilic active principles and fatty colorants 	0,78
ISOPROPYL PALMITATE	142-91-6	<ul style="list-style-type: none"> • Branched light emollient with dry touch and high absorbability • High spreadability and very low after feel on the skin 	0,80
BUTYL STEARATE	85408-76-0	<ul style="list-style-type: none"> • Rich ester giving substantiveness to the skin • Recommended for lipsticks, dry products and conditioning agents 	0,78
DIBUTYL ADIPATE	105-99-7	<ul style="list-style-type: none"> • skin conditioning-emollient, film forming, plasticizer, skin conditioning, solvent 	
DIISOPROPYL ADIPATE	6938-94-9	<ul style="list-style-type: none"> • Light ester used to replace silicone oils • Suitable for deodorants, make-up products and fragrances 	-
ISOCETYL STEARATE	25339-09-7	<ul style="list-style-type: none"> • Emollient with soft and velvety after feel • Recommended for light textured daily creams 	0,52
CETEARYL ISONONANOATE	111937-03-2	<ul style="list-style-type: none"> • Emollient and fattening agent with a soft but not greasy touch on the skin • Mostly used for wet wipes 	0,76
ISONONYL ISONONANOATE	59219-71-5	<ul style="list-style-type: none"> • Light emollient giving a soft and silky sensation on the skin • Suitable for skin care, sun care and make-up products (blushes) 	-
OCTYLDODECYL STEAROYL STEARATE	90052-75-8	<ul style="list-style-type: none"> • Emollient with a long-lasting soft feel on the skin • Recommended for daily creams and make-up formulations 	-
DIISOSTEARYL MALATE	67763-18-2	<ul style="list-style-type: none"> • Rich and glossy emollient used as wetting agent and dispersant for powders and pigments • Recommended for lipsticks, eyeshadows and blushes 	-
CETEARYL ETHYLHEXANOATE	90411-68-0	<ul style="list-style-type: none"> • Emollient and film former with high spreadability, water repellency and good wetting properties for dry skin conditions • Suitable also as hair conditioning agent 	0,61
PEG-7 GLYCERYL COCOATE	68201-46-7	<ul style="list-style-type: none"> • Water soluble ethoxylated surfactant with softening and solubilizing properties • Suitable for hair dyes, shampoos and products for body care 	-



SLI Chemicals GmbH

Insterburger Str. 7
D-60487 Frankfurt/Main (Germany)

E-Mail: info@slichemicals.com
Phone: +49 (0) 69 74 74 28 0
Fax: + 49 (0) 69 74 74 28 20

Managing Director
Christian Sommer

Control-number: DE-ÖKO-006
RSP0-number: 9-3946-20-000-00
Tax-No.: 014 243 47854
VAT-No.: DE813558901

Visit us online

www.slichemicals.com

Follow us on LinkedIn and learn more our
company and portfolio

#SLIChemicals 